



October 2019

University of Georgia

Volume 1, Issue 11

### Special points of interest:

- Drought Monitor
- Drought on Lawns
- Cattle Corner

### Inside this issue:

- Drought Monitor **1**
- Drought on Lawns **1**
- Cattle Corner **2**
- Upcoming Programs **2**
- Calendar of Events **3**
- Ag Comic of the Month **4**

## Drought Monitor

The U.S. Drought Monitor (USDM) is a map that shows the location and intensity of drought across the country. The data is updated each Tuesday and released on Thursday.

In order for the LFP (Livestock Forage Program) to trigger, a county must have one of these two things happen.

1. The county must be a D2 (Sever Drought) for 8 consecutive weeks.
2. The county must hit D3 (Extreme Drought) status at any point.

At the moment all 9 counties that our FSA (Farm Service Agency) covers are listed at D2. This includes Upson and Lamar counties.

Right now extension agents and FSA employees are strongly encouraging producers and individuals to report to the Drought Monitor. We ourselves have been reporting in multiple sys-

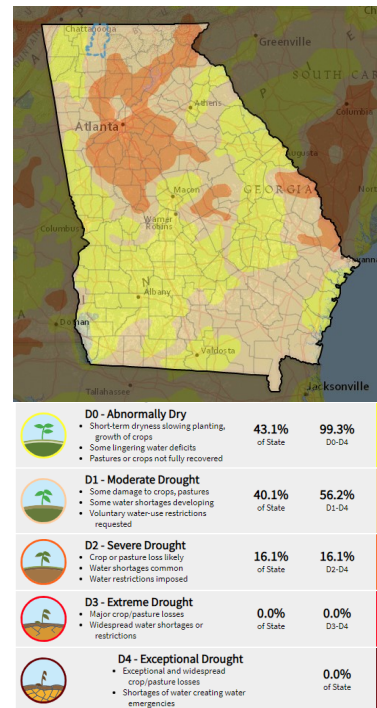
tems since before the drought began.

### How to report to the drought monitor:

1. Go to the link <https://www.drought.gov/drought/states/georgia>
2. Click "Report Your Drought Impacts"
3. Fill out the report, adding pictures and detail of the conditions you are encountering
4. Submit your report

If individuals don't report over what is happening on their individual properties/farms/homestead, no one can know what they are experiencing.

*If you do not report, they do not know!*



Drought Monitor Map Pulled Sept 26, 2019

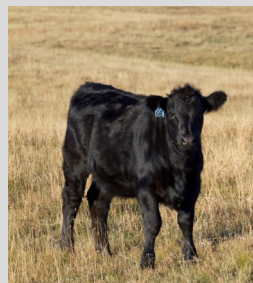
## Combatting Effects of Drought on your Lawn

**Water Correctly.** In the absence of rainfall, established lawns need about 1 inch of water a week. Because the soil cannot absorb that much water at one time, which results in runoff, smaller volumes of water totaling 1 inch may need to be applied at separate times during the week. For example, two half-inch applications could be made

three to four days apart. Many homeowners use irrigation systems to water their lawns, and they tend to water lightly and frequently. This can result in poorly rooted turf grass.

**Water Deeply and Infrequently.** The optimum watering schedule can be roughly determined by observing the number of days that pass

between signs of moisture stress. Apply sufficient water to saturate the root zone to a depth of 6-8 inches. Clay soils and sloped areas may require staggered watering intervals to allow time for water infiltration between cycles and prevent runoff. Irrigating in early morning conserves water by reducing evaporation and drift.



**“It’s supposed to be hard. If it wasn’t hard, everyone would do it. The hard is what makes it great.”**

**—Holly Spangler**



## Cattle Corner (Drought)

As the drought becomes more advanced, forage species begin to go dormant. Drought alone rarely kills forage species, but overgrazing forages during this stressful stage can cause persistence problems. Poor persistence leads to weed encroachment and soil erosion, which can be costly to the producer in the future.

Therefore, it is important to restrict access to the entire pasture. This will limit damage from overgrazing to specific areas instead of your entire pasture. Renovate these “sacrifice areas” following the drought. Allow only limited access to the rest of your pasture for brief periods. Carefully examine the costs associated with feeding hay and supplements.

Develop a ration based on available feeds and forage supplies, and provide just enough to maintain moder-

ate body conditions (ex: maintain body condition scores for cattle around five).

Dry females have their lowest nutritional needs in early to mid pregnancy. Early weaning is a strategy used to maintain brood animals on poor quality forage with little or no supplemental feed, allowing the producer to stretch available feed. You should view forage and supplements as investments, especially during a drought.

Producers should invest only in animals that are likely to generate a return and should focus on those animals that will provide the highest returns. Carrying open, old, or unproductive animals through a drought is unlikely to be feasible. As the drought worsens, prices for culled animals will drop quickly. Pay close attention to the long-range weather

forecasts and the current market. Do not hesitate to lower the population early rather than too late. If no drought relief is in sight, sell low priority animals before the market price declines sharply.

Herd management during a drought may not prevent short-term losses, but can prevent long-term losses to the forage-based livestock operation. As drought sets in, the herdsman can temporarily lower stocking densities (fewer grazing animals per acre), stretch available forage with hay or supplemental feedstuffs, or even lower the nutritional needs of animals. Yet, such tactics may only be cost-effective for a short time. Keep in mind that culling of animals may be necessary as the drought worsens.

<https://extension.uga.edu/publications/detail.html?number=C914#Advanced>

## Upcoming Programs

**Beef Cattle 10** Oct 17 & Nov 21, 2019 This is a program focusing on beef cattle basics. If you are interested or want more information, contact the NRCS office.

(770)358-0787 ext 3

**Monroe Lunch N Learn** Oct 21, 2019 the topic will be Controlling Nuisance Pests and Wildlife. Nov 25, 2019 the topic will be Financial Management for the New Year. Cost is \$10. Contact the Monroe Extension Office for details.

(478)994-7014

**Sprayer Calibration** Oct 23, 2019 from 12p-1:30p. Cost is \$10 with lunch and pesticide credit provided. (Private and Commercial). Please contact Upson Extension for details and location.

(706)647-8989

**Pike Lunch N Learn** Oct 24, 2019 from 11a-1p. The topic will be Year-round Color. Cost is \$10. Contact the Pike Extension Office for details.

(770)567-2010

**Mid-Georgia Cattlemen’s Association Ladies Night** Nov 14, 2019 at 7pm. Location will be First Methodist Church in Upson County. Please RSVP on the MGCA website.

<http://mgcaonline.com/>

**Halloween Costume Prize** Oct 31, 2019 from 3p-5p. Come by the Upson Extension Office dressed in your costume, take a picture, and get a prize! For all ages. Contact the Upson Extension Office for more details.

(706)647-8989

**Building Better Beef** Nov 7, 2019 from 6p-8:30p. Topic will be Improving Profitability of Beef Herds. Cost is \$10. Contact Meriwether Extension for details.

(706)672-4235

**Extension Holiday DIY (Fall)** Nov 8, 2019 at 3p at the Upson County Extension Office. Cost is \$15. Please RSVP to the Upson Extension Office by Nov 1, 2019.

(706)647-8989

**Lunch ‘N Learn** Nov 11, 2019 from 10:30a-12:30p. Location is Barnesville-Lamar County Library. Cost is \$10. Topic will be Fall Ornamentals. Please RSVP to the Lamar Extension Office by Nov 8, 2019.

(770)358-5163

# October 2019

Sun	Mon	Tue	Wed	Thu	Fri	Sat
		1	2	3	4	5
6	7	8	9	10	11	12
Georgia National Fair (Perry)						
13	14	15	16	17	18	19
			SunBelt Expo (Moultrie)	Beef Cattle 101 (Lamar)		
20	21 Lunch 'N Learn (Monroe)	22	23 Sprayer Calibration 12p-1:30p (Upson)	24 Lunch 'N Learn 11a-1p (Pike)	25	26
27	28	29	30	31 Halloween Costume Prize 3p-5p (Upson)		

# November 2019

Sun	Mon	Tue	Wed	Thu	Fri	Sat
					1	2
3	4	5	6	7 Building Better Beef 6p-8:30p (Meriwether)	8 Holiday DIY 3p-5p (Upson)	9
10	11 Lunch 'N Learn 10:30a-12:30p (Lamar)	12	13	14 MGCA Ladies Night (Upson)	15	16
17	18	19	20	21 Beef Cattle 101 (Upson)	22	23
24	25 Lunch 'N Learn (Monroe)	26	27	28 Thanksgiving Holiday	29 Thanksgiving Holiday	30

Upson/Lamar Extension  
University of Georgia

Upson County Extension  
305 S. Hightower St.  
Suite 170  
Thomaston, GA 30286  
**(706) 647-8989**

Lamar County Extension  
118 Academy Drive  
Suite A  
Barnesville, GA 30204  
**(770) 358-5163**

E-mail: [hrobinson@uga.edu](mailto:hrobinson@uga.edu)



## What is UGA Extension?

Through county offices throughout the state, University of Georgia Cooperative Extension offers reliable information and programs in the areas of agriculture, food, families, the environment and 4-H youth development. Let us help you learn, grow and do more!

<http://extension.uga.edu/county-offices/upson.html>  
or  
<http://extension.uga.edu/county-offices/lamar.html>

An equal opportunity/affirmative action institution

Follow us on Facebook!!! <https://www.facebook.com/upsonlamarextension/>

## AG Comic of the Month

