



May 2018

Volume 1, Issue 2

Special points of interest:

- Beef Month
- "My Ag Hero"
- Congratulations!
- Upcoming Programs

Inside this issue:

Beef Month	1
Newsletter Update	1
My Ag Hero	2
Congratulations!	2
Upcoming Events	2
Calendar of Events	3
Ag Comic of the Month	4

University of Georgia

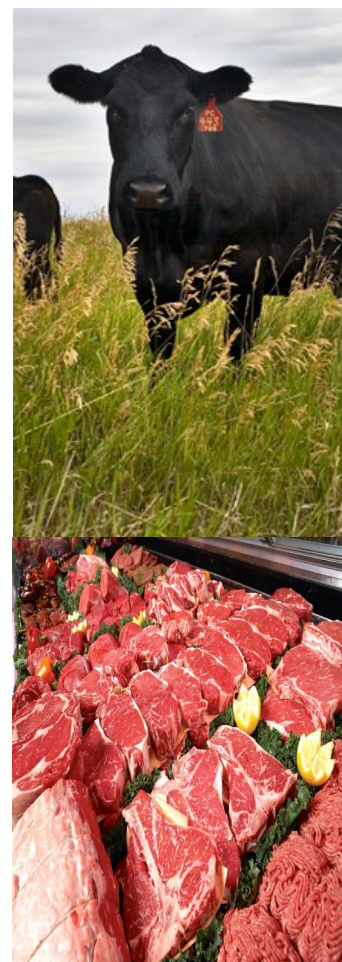
Beef Month

Ladies and gentlemen it is BEEF MONTH! I would like to take a moment and say thank you to all the beef producers in and around our counties. Your passion for the industry has not gone unnoticed.

Beef Facts for Beef Month

- 76 million Americans eat beef, every day.
- A live steer weighing about 1,000 pounds will yield about 450 pounds of edible meat.
- More beef is consumed on Memorial Day than any other day of the year.
- Fourth of July and Labor Day typically rank second in beef consumed on the specific day.
- To obtain the same amount of iron found in a 3-ounce serving of beef, you'd have to eat at least 3 cups of raw spinach.

- There are more than 800,000 ranchers and cattle producers in the United States.
- More than 97 percent of beef cattle farms and ranches are classified as family farms.
- The hide from one beef animal can make 144 baseballs, 20 footballs or 12 basketballs.
- Disneyland sells over 4 million hamburgers each year.
- The average cow has more than 40,000 jaw movements per day.
- There are close to 800 registered breeds of cattle around the world.
- Georgia cattlemen own approximately 1.3 million head of cattle.
- In Georgia, cattle is the state's sixth largest cash crop.



Newsletter Update

A monthly newsletter will be published the last Friday of each month, so that events are relevant for the upcoming month. These newsletters will be available in the following places.

- The County Extension Offices (Printed)
- On the County Extension Offices Websites

- Emailed to our continually updated email lists.
- Quarterly, a newsletter will be physically mailed out to our mailing list with all upcoming events. This quarterly newsletter will be available in all the fashions listed before, as well.

If you are interested in submitting anything to the Upson Lamar Farmer; your own AG Hero, an article, or an upcoming ag event; please contact Hailey Robinson through email.
hrobinson@uga.edu



Part of the **tyson** Foods Family

Tyson Foods:
ibp Trusted Excellence

“Success is the sum of small efforts, repeated day in and day out.”

—Robert Collier



Danny Bentley accepting his award from Marcus South

My Ag Hero

With is being Beef Month, I wanted to highlight a company that most everyone has heard of, **Tyson Foods**. Most people associate Tyson Foods with chicken products but they are actually the largest fresh beef distributor in the United States.

The Tyson Beef Slaughterhouse in Springdale, Arkansas can harvest up to 28,700 head of beef daily. That is just one of the beef

slaughtering facilities in the United States.

In 1967, Tyson Fresh Meats perfected an innovation that dramatically changed the fresh meat industry. They started boxed beef. Instead of shipping customers an entire carcass, they started breaking down the carcass in smaller, more manageable portions. The cuts were then vacuum-packaged and shipped in boxes.

Now, a customer can order specific cuts of meat from

the boxed beef program, **ibp Trusted Excellence**. Whether a customer wants a case of briskets or a case of short loins, ibp will package and ship the fresh meat directly to the customer.

A customer can even get as particular as choosing a specific grade of beef. For instance, if they wanted a case of prime rib rolls, ibp will prepare a case full of USDA Prime graded rib rolls and send that directly to the customer.

Congratulations!

It is time to give a big congratulations to a couple of individuals who put their whole hearts into serving not only in our counties and the Mid-Georgia Cattlemen’s Association, but in the whole Georgia Cattlemen’s Association.

At the Georgia Cattlemen’s Convention and Beef Expo in April, two remarkable individuals were presented with awards recognizing all the amazing things they do for the association, members, and community.

On Friday Night at the Cattlemen’s Ball, the **David Gazda Visionary Award** was awarded to Mr. Danny Bentley. This award is given to an individual who goes above and beyond to help influence the Youth County Council (YCC).

Also on Friday night at the Cattlemen’s Ball, Mrs. Cynthia Douglas was awarded into the **Georgia Cattlewomen’s Hall of Fame**. Her years of leadership, knowledge, and willingness to anything and everything for the association, made her the ideal person for this recognition.



Congratulation to both of you, and thank you for positively impacting so many lives in our community.

Upcoming Events

Radon in Well Water and Air Workshop May 3, 2018
Please contact Monroe County Extension if interested.

(478)994-7014 or
dlynch@uga.edu

Mid-Georgia Cattlemen’s Association Membership Meeting May 10, 2018

The May meeting will be held in Lamar County. There will be numerous

vendors, ribeye steaks for dinner, and Gary Black will be our speaker. Please RSVP on the MGCA website.

<http://mgcaonline.com/>

Monroe County Hay Field Day May 11, 2018

Please contact Monroe County Extension if interested.

(478)994-7014 or
uge2207@uga.edu

Upton 4H Krispy Kreme Fundraiser May 12, 2018

Will be located at the 5-way stop, Walmart parking lot, and The Pie parking lot. 9am-noon

New Tax Law Workshop May 15, 2018

Located at the Ag Center & Extension Office. Time 9am-Noon. Cost is \$20. Please register online.
extension.uga.edu

May 2018

Sun	Mon	Tue	Wed	Thu	Fri	Sat
		1	2	3 Radon Workshop (Monroe County)	4	5
6	7	8	9	10 MGCA Membership Meeting (Lamar)	11 Hay Field Day (Monroe County)	12 Upson 4H Krispy Kreme Fundraiser
13	14	15 New Tax Law Workshop (Carroll County)	16	17	18	19
20	21	22	23	24	25	26
27	28	29	30	31		

June 2018

Sun	Mon	Tue	Wed	Thu	Fri	Sat
					1	2
3	4	5	6	7	8	9
10	11 Lunch 'N Learn 10:30a-12:30p (Lamar)	12	13	14	15	16
17	18	19	20	21	22	23
24	25	26	27	28	29	30

Upson/Lamar Extension
University of Georgia

Upson County Extension
305 S. Hightower St.
Suite 170
Thomaston, GA 30286
(706) 647-8989

Lamar County Extension
118 Academy Drive
Suite A
Barnesville, GA 30204
(770) 358-5163

E-mail: hrobinson@uga.edu



What is UGA Extension?

Through county offices throughout the state, University of Georgia Cooperative Extension offers reliable information and programs in the areas of agriculture, food, families, the environment and 4-H youth development. Let us help you learn, grow and do more!

<http://extension.uga.edu/county-offices/upson.html>
or
<http://extension.uga.edu/county-offices/lamar.html>

AG Comic of the Month

