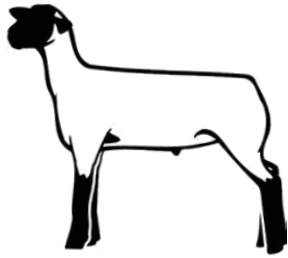


CLUB LAMB PROGRAM TIMELINE



JANUARY-MAY:

Your lamb is born.

Meat breeds such as Suffolks and Hampshires are most successful in the show ring. There are five categories for market lambs: black face, naturals, white/speckle face, hair and other breeds.

MAY-JUNE:

Purchase your lamb and bring it home. Approximate cost per animal is \$200-\$1000. Develop a feed and exercise program. Teach him to lead and brace.

JULY:

Tag all market lambs going to the Georgia National Fair in Perry, GA. Plan which local shows to attend. Go to www.gclpa.com for a complete list of shows.

OCTOBER:

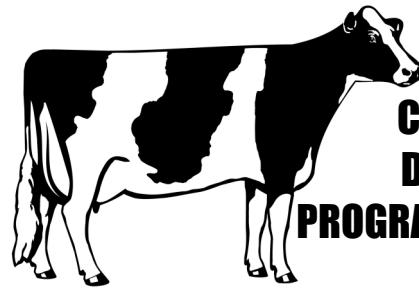
State Market Lamb Show at Georgia National Fair in Perry, GA.

DECEMBER:

Tag all breeding ewes for Georgia Junior State Livestock Show in Perry, GA.

FEBRUARY:

Georgia Junior State Livestock Show– Breeding



COMMERCIAL DAIRY HEIFER PROGRAM TIMELINE

MARCH 1ST– SEPTEMBER 30TH:

Your heifer must be born in this time period.

AUGUST– SEPTEMBER:

Pick out and begin working with heifer (depending on age). Cost per animal can be \$200-\$1000 if purchased, but calves are usually loaned by local dairymen.

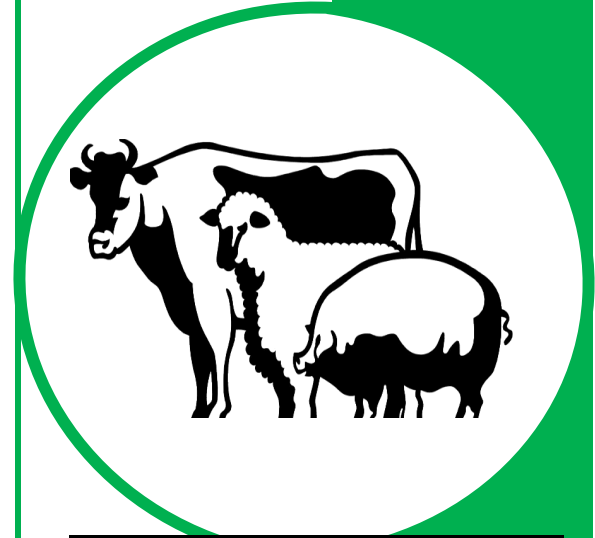
NOVEMBER:

Tag all commercial dairy heifers. Heifers may not be registered.

FEBRUARY:

Georgia Junior National Commercial Dairy Heifer Show

For more info or if you have any questions or concerns please feel free to visit or call the
Morgan County Extension Office
440 Hancock Street
Madison, GA 30650
706-342-2214



**LIVESTOCK SHOWING
WITH MORGAN COUNTY 4-H**

*Come Show
With Us!*

**Morgan County
Extension Office**

440 Hancock Street
Madison, GA 30650

Phone: 706-342-2214

Fax: 706-343-6451

E-mail: [lray@uga.edu.com](mailto:lray@uga.edu)



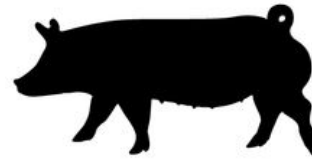
GEORGIA 4-H LIVESTOCK PROGRAM

The Georgia 4-H Livestock Program provides opportunities to develop life skills and enhance knowledge in an ethical manner.

- Individuals are responsible for purchasing, feeding, and caring for their animals.
- The Morgan County Extension Office will provide support, education and clinics to teach 4-H'ers how to fit, show and care for their animals
- All 4-H'ers must agree to follow 4-H livestock rules and the 4-H Code of Conduct



MARKET HOG PROGRAM TIMELINE



SEPTEMBER 1ST:

Your pig is born. Common breeds include Hampshire, Duroc, Yorkshire and Blue Butt (Hampshire/Yorkshire Cross)

OCTOBER-NOVEMBER:

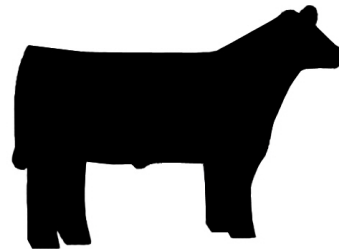
Purchase your show pig. Approximate cost of animal is \$200-\$400. Develop a nutrition plan and complete Pork Quality Assurance training.

DECEMBER:

Tag your pig for the Georgia Junior National Market Hog Show in Perry, GA.

FEBRUARY:

Georgia Junior National Market Hog Show



CLUB CALF PROGRAM TIMELINE

AUGUST- NOVEMBER:

Your calf is born. Popular breeds include Angus, Hereford, Simmental and commercial beef crosses. Approx. cost per animal \$2000-\$5000

MAY-JUNE (of following year):

Purchase your calf and bring it home. Develop a feed and exercise plan. Halter train your calf.

(CONTINUED ON NEXT PAGE)

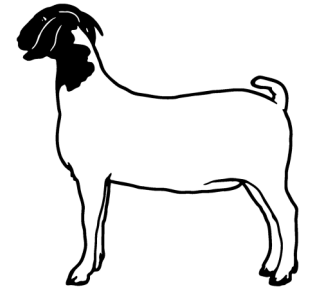
OCTOBER:

Tag all calves going to GA. Junior National Livestock Show in Perry, GA (in February). Plan which local shows to attend. Go to www.georgiaclubcalves.org for a complete list of shows. Georgia National Fair in Perry, GA and Jr. Invitational Steer and Heifer Show.

FEBRUARY:

State Market Steer and State Beef Heifer Show in Perry, GA.

MARKET GOAT PROGRAM TIMELINE



JANUARY-MAY:

Your kid is born. Meat breeds such as Boer are best for showing.

MAY-JUNE:

Purchase your kid and bring it home. Approximate cost per animal is \$300-\$1000. Develop a feed and exercise program. Teach him to lead and prep for shows.

JULY:

Tag all market goats going to the Georgia National Fair in Perry, GA. Plan which local shows to attend.

OCTOBER:

State Market Goat Show at Georgia National Fair in Perry, GA.

FEBRUARY:

State Breeding Doe Show