

## **IRWIN COUNTY EXTENSION AGRICULTURE NEWS - Vol. 10 Tue. Mar. 22, 2022**

**Phillip Edwards Irwin County Extension Coordinator**

*In this issue: Recent, Meetings/Events, Thank You Sponsors, Wheat Disease and Fungicide Update, UPW Training, Precision Ag Update, Got Chickens, Better Beef Systems Extravaganza, Peanut Award Opportunities, Vegetable Planting Chart, Crop Comparison Tool, Cotton Trust Protocol, Important Links and Info*

### **Recent**

Some wheat was impacted by the cold temperatures two weekends ago. Corn planting is well underway. Or wheat is approaching a critical time for fungicide applications to protect the flag leaf or head or in some instances – both. You need to be looking now for sure. Check out <https://wheatcab.psu.edu> to see our risk.

Please see the Ocilla Star and the Ag Week section. 5<sup>th</sup> grade Ag Day is Thursday. GA Peanut Achievement Club forms are at office (April 1 deadline) so come get yours. Also, we have Red Bounty and Amelia tomato plants for sale at our office and lime and land plaster (calcium) donated by Irwinville Ag Services.



GA Ag Week is March 21-24 – Irwin 5<sup>th</sup> grade Ag Day is Thu Mar 24th



Thankful for the rainfall over the weekend – much needed



Peanut Production Guides available at our office



Flag leaf – note awns protruding at base of leaf

**Meetings/Events – Please call if you have any questions and to sign up for these meetings in BOLD – WATCH FOR UPDATES, ADDITIONS AND REVISIONS. All of the times are correct. Pesticide credits for meetings in BOLD.**

Meeting/Events	Date	Location
5 <sup>th</sup> Grade Ag Awareness	Thu Mar 24, 2022 9-12	Gary C. Tankersley Livestock Pavilion
Better Beef Systems Extravaganza	Tue Apr 5, 2022 8:00 am	UGA Animal Science Farm Tifton
Beef Cattle Update	Tue Apr 7, 2022 6:00 pm	Morehead Store
Peanut Cotton Insect Update and UPW	Early - Mid April – To Be Announced	CASE Farm

**Thank You to our Meeting Sponsors - Americot, Bayer, Chaney Bush Irrigation, Corteva/Pioneer, D and F Grain, Dixie Peanut, Farmers Quality Peanut, Hudson Pecan, Irwinville Ag Services, Nutrien, Osceola Cotton Co., Morehead Pecan, Plant Food Systems, Savage, Shann Peanut, and South Central Gin. Your support is greatly appreciated.**

### **2022 Wheat Disease and Fungicide Update**

**Ethredge, Martinez-Espinoza**

- Foliar Diseases** – Recent weather patterns in the southern US can contribute to the dispersal and establishment of wheat diseases. Critical wheat growth stages are quickly approaching; therefore, scouting of wheat fields should commence or increase if already occurring. Protecting the flag leaf from foliar diseases is critically important for yield preservation. The decision whether or not to apply a fungicide should be made by carefully weighing variety planted, yield potential, and if current environmental conditions are conducive for disease development at each specific site. Just this week, 3-15-22, Stripe rust has been found in a couple of southwest Georgia counties so we need to be looking closely for it. When seen

from a distance it often looks like a dry area, that just looks odd. Here's some images from the UGA Stripe Rust brochure. [https://secure.caes.uga.edu/extension/publications/files/pdf/C%20960\\_4.PDF](https://secure.caes.uga.edu/extension/publications/files/pdf/C%20960_4.PDF)



Figure 4a. Mature symptoms of stripe rust. Infected plant tissue becomes brown and dry.



Figure 4b. Mature symptoms of stripe rust. Infected plant tissue becomes brown and dry.

Current Extension recommendations are to apply a fungicide anytime stripe or leaf rust is found in a field and when other foliar diseases (powdery mildew, stagonospora leaf/glume blotch, tan spot) are progressing up the plant and reach two leaves below the flag leaf. Bear in mind that Powdery mildew tends to diminish as temperatures consistently reach above 75°F and RH falls below 85%. Below are the fungicides available for control of foliar diseases.

- a. **Triazoles** – metconazole (Caramba), propiconazole (Tilt, Popimax), prothioconazole (Proline), prothioconazole + tebuconazole (Prosaro), and tebuconazole containing products (Folicur, others)
- b. **Strobilurins** – azoxystrobin (Quadris, Equation, Satori), fluxastrobin (Evito), picoxystrobin (Approach), pyraclostrobin (Headline)
- c. **Mixed mode of action** – benzoyindiflupyr + propiconazole + azoxystrobin (Trivapro), cyproconazole + picoxystrobin (Approach Prima), fluoxapyroxad + pyraclostrobin (Priaxor), fluoxapyroxad + pyraclostrobin + propiconazole (Nexicor), flutriafol + fluoxastrobin (Fortix, Preemptor), fluxastrobin + tebuconazole (Evito T), flutriafol + azoxystrobin (Topguard), pydiflumetofen + propiconazole (Miravis Ace), propiconazole + azoxystrobin (Quilt, QuiltXcel), azoxystrobin + cyproconazole (Azure Xtra), propiconazole + trifloxystrobin (Stratego), prothioconazole + trifloxystrobin (Stratego YLD, Delaro 325), pyraclostrobin + metconazole (Twinline, Multiva), tebuconazole + trifloxystrobin (Absolute, Absolute Maxx), and tebuconazole + azoxystrobin (Custodia)

A complete list of products, rates, timings, restrictions, etc. can be found on pages 49-52 of the 2021-2022 Wheat Production Guide <https://grains.caes.uga.edu/content/dam/caes-subsite/grains/docs/wheat/Wheat-Production-Guide-2021.pdf> and pages 363-365 of the 2022 Georgia Pest Management Guide. **The section in the Wheat Production Guide contains a wheat fungicide efficacy table developed by the North Central Extension and Research Committee (NCERA-184).**

2. **Fusarium Head Blight/Head Scab** – Fusarium Head Blight requires humid/wet weather coinciding with wheat at **flowering** growth stages for infection to occur. There are no symptoms or signs to scout for, therefore, we rely on weather conditions and predictions. The FHB risk tool <http://www.wheatscab.psu.edu> is now live and available. The platform has been re-designed with new features added so it is important to familiarize yourself with the content again. The application window for chemical control is very tight and must occur during anthesis/flowering. The following are fungicides recommended for control of FHB:

- a. metconazole (Caramba), propiconazole (Tilt), prothioconazole (Proline), tebuconazole (Folicur), prothioconazole + tebuconazole (Prosaro), pydiflumetofen + propiconazole (Miravis Ace)

More information on FHB can be found in the extension publication C1066

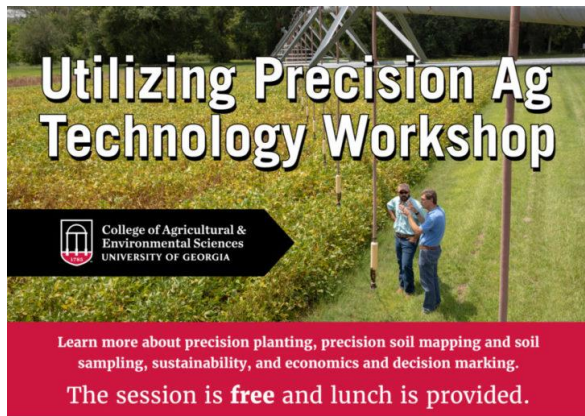
<https://extension.uga.edu/publications/detail.html?number=C1066> or on page 51 of the 2021-2022 Wheat Production Guide and page 365 of the Georgia Pest Management Handbook 2022.

### Using Pesticides Wisely (UPW) Training – GA 2022

The Using Pesticides Wisely training will be offered at the Irwin County Extension office individually so simply call and we will set up a time for you to go through the 1-hour training. We are planning for a Peanut/Cotton Insect/UPW Training in early April so be on the lookout for those details. **IMPORTANT: If you attended the Ext. Weed Management Meeting on Feb. 3 at Morehead Store (116 of you did) then your training obligation has been met for applying Engenia, Tavium, and XtendiMax in 2022. All applicators of Engenia, Tavium, & XtendiMax herbicides must have a private pesticide license; All applicators driving a tractor/sprayer applying these herbicides must attend a UPW Training during 2022 prior to using these products. Must be trained by April 15, 2022.**



## Precision Ag Technology Workshop



# Utilizing Precision Ag Technology Workshop

College of Agricultural & Environmental Sciences  
UNIVERSITY OF GEORGIA

Learn more about precision planting, precision soil mapping and soil sampling, sustainability, and economics and decision making.  
The session is **free** and lunch is provided.

**March 29, 2022**

**Statesboro**

Joe Kennedy Conference Center of  
Ogeechee Technical College  
1 Joe Kennedy Blvd  
Statesboro, GA 30458

Register online:



**March 31, 2022**

**Albany**

Merry Acres Inn & Event Center  
1500 Dawson Rd  
Albany, GA 31707

Register online:



Register using QR Code or use this link

<https://events.attend.com/f/1383794504#/reg/0/> Learn more about precision planting, precision soil mapping and soil sampling, sustainability, and economics and decision making. Free and lunch is provided.

### Schedule:

- 9:00 – 9:15 Welcome
- 9:20 – 10: 05 Concurrent Sections 1 – Topic 1, Topic 2, Topic 3
- 10: 15 – 11:00 Concurrent Sections 2 – Topic 1, Topic 2, Topic 3
- 11:10 – 11: 55 Concurrent Sections 3 – Topic 1, Topic 2, Topic 3
- 12:00 – 12:30 Lunch
- 12:30 – 1:30 Economics and Decision-Making Keynote and Raffle Drawing
- 1:30 End

Sponsored by:



National Institute of Food and Agriculture  
U.S. DEPARTMENT OF AGRICULTURE

This material is based upon work supported by USDA/NIFA under Award Number 2018-70027-28585

## Got Chickens – or Other Poultry?

If so consider logging into this webinar at: <https://fvsuag.zoom.us/joining/register/tZApCumqPz0qEtRtsBvvcRyQaiEVc7Gj5lby> where you can find out more about starting a layer flock, layer production: egg quality and egg candling, biosecurity: steps to protecting your flock.

## POULTRY FARMING: BACKYARD STYLE

**Tuesday,  
April 5, 2022  
Noon – 1 p.m.**

### Speaker:

**Claudia Dunkley, PhD**  
Extension Poultry Scientist, University of Georgia

### Moderator:

**Joshua Dawson**  
FVSU County Extension Agent, Lowndes County

**Register for this virtual  
meeting at this link:**

[bit.ly/fvsuag-update-poultry-farming-20220405](http://bit.ly/fvsuag-update-poultry-farming-20220405)

Watch the simulcast:  **LIVE**  
[facebook.com/pg/FVSUCAFST/videos](https://facebook.com/pg/FVSUCAFST/videos)

### Topics:

- ▶ Starting a Layer Flock
- ▶ Layer Production: Egg Quality and Egg Candling
- ▶ Biosecurity: Steps to Protecting Your Flock

### For more information, contact:

**Kamilah Woodham**  
478-825-4329  
[kamilah.woodham@fvsu.edu](mailto:kamilah.woodham@fvsu.edu)



FORT VALLEY  
STATE UNIVERSITY  
Empower the POSSIBLE

FVSU  
Extension  
Knowledge for Learning Lives!

## Better Beef Systems Extravaganza "A Beef and Forage Field Day"

Sponsored by the Georgia Commodity Commission for Beef

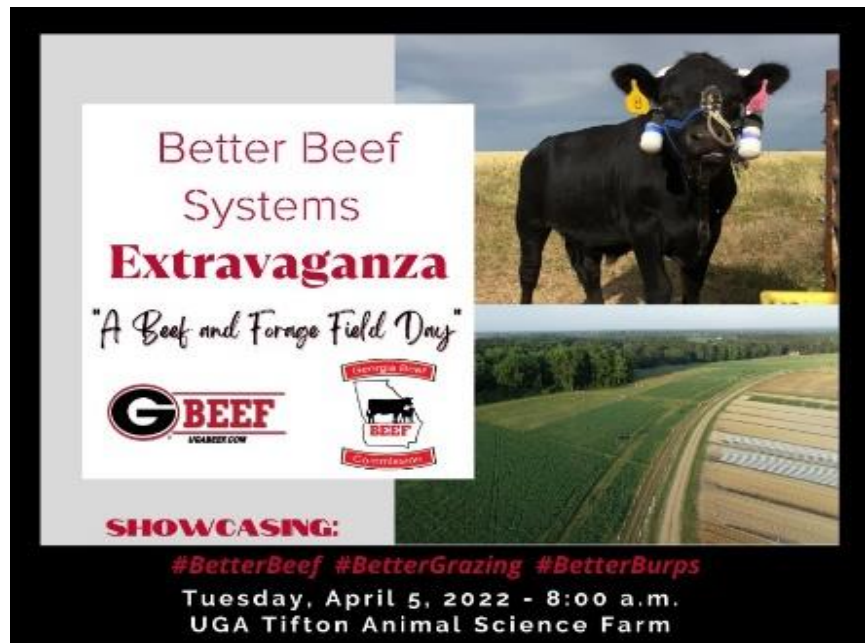
Event Date: Tuesday, April 5th, 2022 @ 8:00 a.m.

Location: UGA Animal Science Farm, Tifton

Online Registration at [https://estore.uga.edu/C27063\\_ustores/web/store\\_main.jsp?STOREID=487&SINGLESTORE=true](https://estore.uga.edu/C27063_ustores/web/store_main.jsp?STOREID=487&SINGLESTORE=true)

Topics Covered

- Sustainability in Beef Production Systems
- Feeding cattle in Georgia
- Alfalfa in the South
- Precision Agriculture in Hay Fields
- Bull Development
- Management Strategies
- And more!



## Peanut Award Opportunities

### Georgia Peanut Achievement Club, TM Hobbs High Yield Peanut Award

Applications for the Georgia Peanut achievement Club have arrived. Please look over your results for 2021 and consider entering. All entries are appreciated and will be forwarded to Dr. Monfort. So, in Irwin we have two awards the TM Hobbs Irwin County High Yield Peanut Award and the Georgia Peanut Achievement Club Award and our peanut farmers are encouraged to apply. From these award applications we will also recognize the high winner in the county and they will be named the TM Hobbs High Yield Peanut Award winner. There is no acre requirement for the TM Hobbs Award. You will need to have a copy of the FSA 578 form showing all your peanut acres and also bring all of your weight tickets. Call ahead and come to our office and we will assist you with this application. Fifteen winners will be chosen for the GA Peanut Achievement Club. One statewide winner in each of the three acreage categories (100-299.9 acres), 300-699.9 acres), and (700 or more acres). There will also be one district winner from each of the four districts in each of these categories (100-299.9 acres), 300-699.9 acres), and (700 or more acres). In the first two categories, you need to average 4000 pounds per acre or more. If you are in the third category (700 acres and above) you will need to average 3500 pounds per acre or more. Take a look at your total acres, yield, and please consider applying. We have had numerous winners from Irwin County in years past. Our most recent winners of this award were Chip Dorminy and Bucky Tyler.

### Farm Press Peanut Efficiency Award

We have this application on hand here at our office. Peanut growers who consistently produce high-yielding, high-quality crops are deserving of special recognition. Farm Press, in cooperation with the Southern Peanut Growers Conference, has established the Peanut Efficiency Award. Farm Press will present Peanut Efficiency Awards to growers in three major U.S. peanut producing regions. Awards will be based on production efficiency, honoring those growers who produce the highest yields at the lowest cost per acre. Four regional winners are honored and if you're interested you will be in the Lower Southeast Region. Armond Morris was the regional recipient of this award in 2021. The Southern Peanut Growers Conference is set for July 21-23, 2022.



## Vegetable Planting Chart

Vegetable	Days to maturity*	Cultivars**	Planting dates		Seeds/plants per 100 ft.	Spacing rows per plants	Depth to plant***
			Spring	Fall			
asparagus	2nd year	Jersey Giant, Jersey Knight, Mary Washington, Purple Passion	Jan. 15 – Mar. 15	Nov. & Dec.	50 roots	36" x 18-24"	6"
beans, bush	50-60	Bronco, Blue Lake 274, Half-Runners (State, White, Volunteer), Kentucky Runner, Roma	Mar. 15 – May 1	Jul. 5 – Aug. 10	0.5 lb	36" x 2-4"	1"-1.5"
beans, pole	65-75	Blue Lake, Dade, Kentucky Blue, Moccasin	Mar. 15 – May 10	Jul. 1 – Aug. 1	0.5 lb	36" x 4-12"	1"-1.5"
beans, lima	65-75	Henderson's Bush Fordhook 242, Jackson Wonder (Speckled)	Mar. 15 – Jun. 1	Jul. 1 – Aug. 1	0.5 lb	36" x 3-4"	1"-1.5"
beans, pole lima	80-85	Sieva, Florida Speckled	Mar. 15 – Jun. 1	Jul. 1 – Aug. 1	0.5 lb	36" x 6-8"	1"-1.5"
beets	55-65	Detroit Dark Red, Red Ace, Ruby Queen	Feb. 15 – Apr. 1	Aug. 1 – Sep. 20	1 oz	18-36" x 2"	0.5"
broccoli	60-80	Marathon, Packman, Patriot, Premium Crop, Bravo, Decathlon	Feb. 15 – Mar. 15	Aug. 1 – Sep. 1	100 plants	36" x 12"	----
butterpea	70	Dixie	Apr. 1 – May 1	Jul. 1 – Aug. 1	0.5 lb	36" x 3-4"	1"-1.5"
cabbage	70-120	A&C No. 5+, Blue Dynasty, Bravo, Early Round Dutch, Rio Verde, Green Jewel	Jan. 15 – Mar. 15	Aug. 1 – Oct. 1	100 plants	36" x 12"	----
cantaloupe	80-90	Ambrosia, Athena, Saticoy Early, Sweet	Mar. 20 – Jun. 20	----	1 oz	60" x 36"	1"
carrot	70-95	Chantenay, Scarlet Nantes, Sweetbites, Sweet Delight, Thumbelina (small)	Jan. 15 – Mar. 20	Aug. 20 – Sep. 15	0.5 oz	18-36" x 2-3"	0.25"
cauliflower	60-75	Absolute, Early Snowball, Graffiti (purple color), White Magic, Symphony	Mar. 1 – Apr. 1	Jul. 15 – Aug. 15	100 plants	36" x 12"	----
collards	55-85	Blue Max, Georgia Southern, Hevi-Crop	Feb. 1 – Mar. 15	Aug. 1 – Sep. 1	0.5 oz	36" x 8-16"	0.5"
corn, yellow	65-90	Bodacious, Golden Queen, Honey Select, Mirai 131, Seneca	Mar. 15 – Jun. 1	----	0.25 lb	36" x 12-18"	1"-1.5"
corn, white	65-90	Avalon, How Sweet It Is, Seneca Sensation, Silver King, Silver Princess, Silver Queen	Mar. 15 – Jun. 1	----	0.25 lb	36" x 12-18"	1"-1.5"
corn, bi-color	65-90	Ambrosia, Butter & Sugar, Honey 'n Pearl, Mirai 301, Peaches & Cream, Serendipity, Sweet Breed Chorus	Mar. 15 – Jun. 1	----	0.25 lb	36" x 12-18"	1"-1.5"
cucumber, slicing	50-65	Bush – Salad Bush Hybrid, Bush Crop, Fanfare Vine – Burpless Hybrid, Diva, Marketmore, Straight Eight, Sweet Slice, Sweet Success	Apr. 1 – May 15	Jul. 15 – Aug. 15	1 oz	60" x 12"	0.5"-0.75"
cucumber, pickling	50-65	Bush Pickle, Calypso, County Fair	Apr. 1 – May 15	Jul. 15 – Aug. 15	1 oz	60" x 12"	0.5"-0.75"
cucumber, gynoecious	50-65	Calypso, General Lee	Apr. 1 – May 15	Jul. 15 – Aug. 15	1 oz	60" x 12"	0.5"-0.75"
eggplant	75-90	Black Beauty, Classic, Dusky, Ghost Buster's (white), Calliope	Apr. 1 – May 15	Jul. 10 – Jul. 30	50 plants	36" x 24"	----
kale	50-70	Vates, Dwarf Siberian, Blue Armor, Blue Knight	Feb. 1 – Mar. 10	Aug. 1 – Sep. 1	0.5 oz	36" x 8-16"	0.5"
lettuce	60-85	Butterhead, Romaine, Buttercrunch	Jan. 15 – Mar. 1	Sep. 1 – Oct. 1	0.25 oz	18-36" x 8-12"	1/8"
mustard	40-50	Florida Broadleaf, Southern Giant Curled, Red Giant, Savannah	Jan. 15 – Apr. 1	Aug. 15 – Sep. 15	0.5 oz	18-36" x 2"	0.5"
okra	55-65	Annie Oakley II, Burgundy, Cajun Delight, Clemson Spineless	Apr. 1 – Jun. 1	Jun. 15 – Jul. 10	1 oz	36" x 12"	1"
onion, green	60-90	White Portugal	Jan. 1 – Mar. 15	Sep. 1 – Dec. 31	300 plants	18-36" x 3"	----
onion, dry bulb	100-120	Burgundy, Excel, Grano, Red Creole, Savannah Sweet	Jan. 1 – Mar. 15	Oct. 10 – Nov. 10	300 plants	18-36" x 3-4"	----
peas, garden (English)	60-70	Lincoln, Jackson Wonder, Wando, Little Marvel, Green Arrow, Maestro	Jan. 15 – Feb. 15	----	1 lb	36" x 2"	1"-2"
peas, edible pod	60-70	Sugar Daddy, Snow Pea, Sugar Snap	Jan. 15 – Feb. 15	----	1 lb	36" x 2"	1"-2"
peas, Southern	60-70	Blackeyed – California #5 Pinkeyed – Purple Hull FVR Cream Pea – Texas Crème Crowder Pea – Mississippi Silver, Zipper Cream	Apr. 1 – Aug. 10	----	0.5 lb	36" x 3-4"	1"-2"
pepper, bell	65-80	Big Bertha, Camelot x3a, Colossal, Karma	Apr. 1 – Jun. 1	Jul. 25 – Aug. 10	50 plants	36" x 24"	----
pepper, hot	65-95	Habeñero, Jalepeño, Tula, Marbles	Apr. 1 – Jun. 1	----	50 plants	36" x 24"	----
pepper, hot-sweet	65-95	Banana Supreme, Kuberille, Sweet Banana	Apr. 1 – Jun. 1	----	50 plants	36" x 24"	----
potatoes, Irish	70-90	Red (Pontiac), White (Kennebec, Atlantic, Yukon Gold)	Jan. 15 – Mar. 1	----	12 lb	36" x 12"	4"-5"
potatoes, sweet	90-120	Centennial, Georgia Red, Giant Jet, Hernandez, Red Jewel	April 15 – Jun. 15	----	100 plants	36" x 12"	----
pumpkin, tiny	85-120	Little Ironsides	----	----	1 oz	72" x 48"	1"
pumpkin, pie type	85-120	Small Sugar, Sugar Baby, Touch of Autumn	May 15 – Jul. 1 (depending on maturity date)	----	1 oz	72" x 48"	1"
pumpkin, small	85-120	Autumn Gold, Jack O Lantern, Jack of All Trades	----	----	1 oz	72" x 48"	1"
pumpkin, large	85-120	Aladdin, Gold Rush, Major Lantern, Merlin	----	----	1 oz	72" x 48"	1"
pumpkin, giant	85-120	Dill's Atlantic, Giant, Prize Winner	----	----	1 oz	72" x 48"	1"
radish	25-30	Cherry Bell, Scarlet Globe, Champion	Jan. 15 – Apr. 1	Sep. 1 – Oct. 15	1 oz	24" x 1"	0.5"
spinach	40-45	Melody, Winter Bloomsdale, Hybrid #7	Jan. 15 – Mar. 15	Sep. 1 – Oct. 15	1 oz	18-36" x 2"	0.5"-0.75"
squash, summer (zucchini)	40-55	Any yellow or green—all are good and easy to grow. Use compact varieties for limited-space gardens.	Apr. 1 – May 15	Aug. 1 – Aug. 25	0.5 oz	36" x 24"	1"-2"
squash, winter	85-120	Acorn, Buttercup Bonbon, Butternut	Apr. 1 – Jul. 1	----	0.5 oz	60" x 36"	1"-2"
tomato, determinate	70-90	Bush – Celebrity, Early Girl BHN 444, BHN 640, Celebrity, Mountain Fresh, Mountain Spring, Rutgers, Amelia, Mountain Pride	Mar. 25 – May 1	Jun. 15 – Jul. 15	50 plants	48" x 24"	----
tomato, indeterminate	70-90	Early Girl, Better Boy, Big Beef, Big Boy, Beefmaster	Mar. 25 – May 1	Jun. 15 – Jul. 15	50 plants	48" x 24"	----
tomato, cherry	70-90	Jolly, Sweet Baby Girl, Super Sweet 100	Mar. 25 – May 1	Jun. 15 – Jul. 15	50 plants	48" x 24"	----
tomato, grape	70-90	Grape, Juliet	Mar. 25 – May 1	Jun. 15 – Jul. 15	50 plants	48" x 24"	----
turnip	40-60	Purple Top, Royal Crown	Jan. 15 – Apr. 1	Aug. 10 – Sep. 15	0.5 oz	18-36" x 2"	0.5"
watermelon – large	80-90	Mardi Gras, Royal Majesty, Sangria	Mar. 20 – May 1	----	1 oz	72" x 36-48	1"-2"
watermelon – round	80-90	Baby Doll, Crimson Sweet, Ice Box, Imagination, Jade Star	Mar. 20 – May 1	----	1 oz	72" x 36-48	1"-2"
watermelon – small	80-90	Palm Melon, Solitaire	Mar. 20 – May 1	----	1 oz	72" x 36-48"	1"-2"

\*Days to maturity are from planting seed or setting transplants in the garden. The number of days will vary depending on cultivar (some mature earlier than others), temperature and general growing conditions. Check catalogues for individual maturity time.

\*\*Cultivars listed in the chart represent a few of those recommended. There are many other good cultivars worthy of trial.

\*\*\*Plant shallowly in heavy (clay) soil when adequate moisture is present.





## Crop Comparison Tool     Smith

Estimate of 2022 Relative Row Crop Costs and Net Returns

By A.R. Smith and Yanguan Liu, UGA Extension Economists, Department of Agricultural & Applied Economics

[[Due to extreme volatility in input markets, prices may change rapidly. You are encouraged to enter your own prices to best estimate your 2022 cost of production.]]

Mar 2022

Conventional Tillage	IRRIGATED					NON-IRRIGATED						
	Cotton	Peanuts	Corn	Soybeans	Grain Sorghum	Cotton	Peanuts	Corn	Soybeans	Grain Sorghum	Int Mgmt Wheat	Wheat
EXPECTED YIELD per ACRE	1,200 lbs	4,700 lbs	200 bu	60 bu	100 bu	750 lbs	3,400 lbs	85 bu	30 bu	65 bu	75 bu	55 bu
EXPECTED SEASON AVG PRICE	\$0.95 /lb	\$475 /ton	\$6.50 /bu	\$13.00 /bu	\$6.00 /bu	\$0.95 /lb	\$475 /ton	\$6.50 /bu	\$13.00 /bu	\$6.00 /bu	\$8.00 /bu	\$8.00 /bu
GROSS RETURN per ACRE	\$1,140	\$1,116	\$1,300	\$780	\$600	\$713	\$808	\$553	\$390	\$390	\$600	\$440
VARIABLE COSTS per ACRE												
Seed	100	123	122	62	25	100	130	76	62	15	65	43
BWEP	2					1						
Fertilizer & Lime*	235	70	533	118	285	169	70	205	118	182	236	166
Chicken Litter												
Chemicals	125	181	38	60	29	136	153	38	41	29	57	46
Custom Application												
Hand Weeding	18	18				18	18				8	8
Scouting	13	13				13	13					
Fuel and Lube**	44	70	30	27	30	44	70	30	27	30	44	27
Repairs and Maintenance	44	57	24	20	21	44	57	24	20	21	23	15
Irrigation***	82	61	82	51	41	82	61	82	51	41		
Labor	14	35	14	12	14	14	35	15	12	14	17	10
Insurance	20	31	20	13	37	38	44	35	22	30	12	16
Land Rent												
Other												
Interest on Operating Capital	19	18	24	10	13	16	16	12	8	9	13	9
Gin & Warehouse (net after cottonseed)	47					30						
Drying and Cleaning		63	61		31		45	26		20	7	5
Marketing and Fees		15					11					
TOTAL VARIABLE COSTS per ACRE	\$763	\$756	\$948	\$375	\$526	\$623	\$663	\$460	\$312	\$350	\$481	\$346
RETURN ABOVE VARIABLE COST per ACRE	\$377	\$360	\$352	\$405	\$74	\$90	\$144	\$92	\$78	\$40	\$119	\$94
BREAKEYEN PRICE (Variable Cost)	\$0.64 /lb	\$322 /ton	\$4.74 /bu	\$6.24 /bu	\$5.26 /bu	\$0.83 /lb	\$390 /ton	\$5.42 /bu	\$10.40 /bu	\$5.38 /bu	\$6.42 /bu	\$6.29 /bu
BREAKEYEN YIELD per ACRE (Variable Cost)	803 lbs	3,183 lbs	146 bu	29 bu	88 bu	656 lbs	2,792 lbs	71 bu	24 bu	58 bu	60 bu	43 bu
FIXED COSTS per ACRE												
Machinery and Equipment	186	170	87	68	66	186	170	87	68	66	77	54
Irrigation	135	135	135	135	135							
Buildings												
Miscellaneous Overhead	38	38	47	19	26	31	33	23	16	17	24	17
TOTAL SPECIFIED FIXED COSTS per ACRE	\$359	\$343	\$270	\$222	\$728	\$217	\$203	\$110	\$84	\$84	\$101	\$71
TOTAL COST EXCL. LAND & MGT per ACRE	\$1,121	\$1,099	\$1,218	\$597	\$754	\$840	\$866	\$571	\$396	\$434	\$582	\$417
RETURN TO LAND AND MGT per ACRE	\$19	\$18	\$82	\$183	-\$154	-\$127	-\$59	-\$18	-\$6	-\$44	\$18	\$23
BREAKEYEN PRICE (Total Costs)	\$0.93 /lb	\$467 /ton	\$6.09 /bu	\$9.94 /bu	\$7.54 /bu	\$1.12 /lb	\$510 /ton	\$6.71 /bu	\$13.19 /bu	\$6.67 /bu	\$7.76 /bu	\$7.59 /bu
BREAKEYEN YIELD per ACRE	1,180 lbs	4,626 lbs	187 bu	46 bu	126 bu	884 lbs	3,647 lbs	88 bu	30 bu	72 bu	73 bu	52 bu

\* Expected fertilizer \$/lb. of nutrient:

N= \$1.16 P= \$0.76 K= \$0.77

\*\* Season Average Diesel fuel price:

\$4.00 per Gallon

\*\*\* Weighted average of diesel and electric irrigation application costs. Electric is estimated at \$7/appl and diesel is estimated at \$16.50/appl when diesel cost \$4/gal.

Estimate of 2022 Relative Row Crop Costs and Net Returns

By A.R. Smith and Yanguan Liu, UGA Extension Economists, Department of Agricultural & Applied Economics

[[Due to extreme volatility in input markets, prices may change rapidly. You should enter your own prices to best estimate your 2022 cost of production.]]

Mar 2022

Strip-Tillage	IRRIGATED					NON-IRRIGATED				
	Cotton	Peanuts	Corn	Soybeans	Grain Sorghum	Cotton	Peanuts	Corn	Soybeans	Grain Sorghum
EXPECTED YIELD per ACRE	1,200 lbs	4,700 lbs	200 bu	60 bu	100 bu	750 lbs	3,400 lbs	85 bu	30 bu	65 bu
EXPECTED SEASON AVG PRICE	\$0.95 /lb	\$475 /ton	\$6.50 /bu	\$13.00 /bu	\$6.00 /bu	\$0.95 /lb	\$475 /ton	\$6.50 /bu	\$13.00 /bu	\$6.00 /bu
GROSS RETURN per ACRE	\$1,140	\$1,116	\$1,300	\$780	\$600	\$713	\$808	\$553	\$390	\$390
VARIABLE COSTS per ACRE										
Seed	110	123	122	62	25	110	123	79	62	15
Cover Crop Seed*										
BWEP	2					1				
Fertilizer & Lime**	235	70	533	118	285	169	70	205	118	182
Chicken Litter										
Chemicals	141	205	68	63	29	166	178	54	44	29
Custom Application										
Handweeding	18	18				18	18			
Scouting	13	13				13	13			
Fuel and Lube***	44	50	24	22	25	44	50	24	22	25
Repairs and Maintenance	42	47	20	16	16	42	47	20	16	16
Irrigation****	72	51	72	41	31					
Labor	14	27	12	9	11	14	27	12	9	11
Insurance	20	31	20	13	37	38	44	35	22	30
Land Rent										
Other										
Interest on Operating Capital	20	17	24	9	13	17	16	12	8	8
Gin & Warehouse (net after cottonseed)	47					30				
Drying and Cleaning		63	61		31		45	26		20
Marketing and Fees		15					11			
TOTAL VARIABLE COSTS per ACRE	\$777	\$731	\$956	\$354	\$502	\$661	\$642	\$467	\$302	\$337
RETURN ABOVE VARIABLE COST per ACRE	\$363	\$385	\$344	\$426	\$98	\$52	\$166	\$86	\$88	\$53
BREAKEYEN PRICE (Variable Cost)	\$0.65 /lb	\$311 /ton	\$4.78 /bu	\$5.90 /bu	\$5.02 /bu	\$0.88 /lb	\$378 /ton	\$5.49 /bu	\$10.06 /bu	\$5.18 /bu
BREAKEYEN YIELD per ACRE (Variable Cost)	818 lbs	3,077 lbs	147 bu	27 bu	84 bu	696 lbs	2,703 lbs	72 bu	23 bu	56 bu
FIXED COSTS per ACRE										
Machinery and Equipment	183	137	75	61	54	183	137	75	61	54
Irrigation	135	135	135	135	135					
Buildings										
Miscellaneous Overhead	39	37	48	18	25	33	32	23	15	17
TOTAL SPECIFIED FIXED COSTS per ACRE	\$357	\$308	\$258	\$213	\$214	\$216	\$169	\$98	\$76	\$71
TOTAL COST EXCL. LAND & MGT per ACRE	\$1,133	\$1,039	\$1,214	\$567	\$716	\$877	\$811	\$565	\$378	\$407
RETURN TO LAND AND MGT per ACRE	\$7	\$77	\$86	\$213	-\$116	-\$164	-\$3	-\$13	\$12	-\$17
BREAKEYEN PRICE (Total Costs)	\$0.94 /lb	\$442 /ton	\$6.07 /bu	\$9.46 /bu	\$7.16 /bu	\$1.17 /lb	\$477 /ton	\$6.65 /bu	\$12.59 /bu	\$6.27 /bu
BREAKEYEN YIELD per ACRE	1,193 lbs	4,375 lbs	187 bu	44 bu	119 bu	923 lbs	3,413 lbs	87 bu	29 bu	68 bu

\* Value only if cover crop is not harvested, i.e. wheat for grain, etc.

\*\* Expected fertilizer \$/lb. of nutrient:

N= \$1.16 P= \$0.76 K= \$0.77

\*\*\* Weighted average of diesel and electric irrigation application costs. Electric is estimated at \$7/appl and diesel is estimated at \$16.50/appl when diesel cost \$4/gal.

\*\*\*\* Season Average Diesel Fuel Price:

\$4.00 per Gallon

## Cotton Trust Protocol

Please see the attachment to this email or go to <https://trustuscotton.org/> to find out more.



## Important Links and Information

- 2022 UGA Corn Production Guide (NEW) <https://grains.caes.uga.edu/content/dam/caes-subsite/grains/docs/corn/2022-Corn-Production-Guide.pdf>
- See link for 2022 crop budget information - <https://agecon.uga.edu/extension/budgets.html>
- UGA Statewide Variety Trial Link <https://swvt.uga.edu/>
- UGA Irwin County Extension Webpage <https://extension.uga.edu/county-offices/irwin.html>
- Irwin County Extension Agriculture Newsletters – you can find all of our past newsletters by clicking on the link below. <https://extension.uga.edu/county-offices/irwin/agriculture-and-natural-resources/newsletters.html>
- Check your Georgia Private and Commercial Pesticide License credits here <https://agr.georgia.gov/pesticides.aspx>
- Georgia Forages YouTube Channel <https://www.youtube.com/channel/UCL6DgfaB8V2DRnGxzEBxU3w>

*As always for more information contact your Irwin County Extension Office.*

*Thank You, God Bless You,  
Phillip Edwards - Irwin County Agent*



*The mention of trade names in this newsletter does not imply endorsement by the Georgia Extension Service, nor criticism of similar ones not mentioned.*

*COLLEGE OF AGRICULTURAL AND ENVIRONMENTAL SCIENCES, COLLEGE OF FAMILY AND CONSUMER SCIENCES, WARNELL SCHOOL OF FOREST RESOURCES, COLLEGE OF VETERINARY SCIENCES  
The University of Georgia and Fort Valley State University, the U. S. Department of Agriculture and counties of the state cooperating, The Cooperative Extension Service offers educational programs, assistance and materials to all people without regard to race, color, religion, sex, national origin, disability, gender identity, sexual orientation or protected veteran status." An equal opportunity/affirmative action organization committed to a diverse work force.*