

Grady County 4-H Club

Clover Connection

clover connection

October 2024

Happy Fall Y'all!



Peanut Fundraiser

Please join us for our 29th Annual Peanut Fundraiser.

Fundraiser Facts:

- ◇ We sell the re-sealable, 12 oz. cans of plain salted, honey roasted, and butter toffee peanuts from the Georgia Peanut Commission.
- ◇ Sale dates are from October 21st until November 21st.
- ◇ All money & order forms are due at the 4-H Office no later than 5:30 pm on Thursday, November 21st. You can pick up your peanut order on Thursday, November 21st from 1:00 - 5:30pm at the 4-H Office.

Scholarships Awarded to Top Sellers:

1st place = \$150 2nd place = \$125 3rd place = \$100

Anyone with \$100 or more in sales will receive a long sleeve t-shirt.

Shooting Sports Participants:

For those of you who wish to use the Peanut Fundraiser as an activity for the Archery or Shotgun teams, you must sell at least 18 cans to count as 1 activity. If you sell 3 cases (36 cans) it will count as 2 activities. There are 12 cans per case.



Peanut T-Shirt Design Contest

We are excited to announce that we will be having a t-shirt design contest for the Fall Peanut Fundraiser this year!

The winning design will be printed on the t-shirts we give out for selling over \$100 dollars worth of peanuts. **Contest submissions will start Oct. 21st and will end on Nov. 14th.**

Submissions must include a back design and a front pocket design. Submissions can either be hand-drawn or graphically designed.



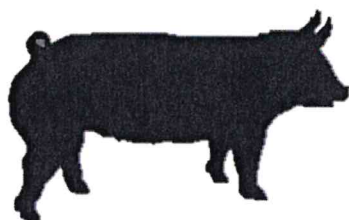
'25 COUNTY MARKET HOG SHOW

Monday, January 20th. The ownership deadline for showing in the county show is Wednesday, November 11, 2024.

Ages from 1st-12th grade are welcome to participate in the county hog show.

If you start looking for pigs around the first of October, they need to weigh around 60 lbs. or around 120 lbs. on November 11th.

There will not be an official weigh-in day this year. 4-H and FFA Advisors will weigh & tag your pigs at your home by the



Modified Trap: This program will begin February 1, 2025. 4-H'ers in grades 6th-12th are eligible to participate. You will need to furnish your own gun; shells and skeet are included in the team registration fee.

Skeet, Trap, & Sporting Clays:

This is our more advanced shotgun program. 4-H'ers in 6th-12th grades are eligible to participate. Official practices will start February 6, 2025.



HUNTER SAFETY COURSE REGISTRATION

For 6th-12th grade 4-H'ers shooting on the Grady County 4-H Archery, Modified Trap or Skeet, Trap & Sporting Clays Teams, you must complete the Georgia Hunter Safety Course.

Use the QR Code or go to <https://georgiawildlife.com/hunting/hunter-resources> to take your course.

After you pass your online Hunter Education Course, log onto your account at GoOutdoorsGeorgia and print your certificate. Check with Ranges at Oakfield in Thomasville for in-person classes.





UNIVERSITY OF GEORGIA
EXTENSION
Grady County



CLOVERLEAF

PROJECT ACHIEVEMENT

**Project Achievement is
as easy as 1, 2, 3...**

1. Pick a topic or project that interests you!
2. Create your presentation and posters.
3. Present your project to judges and walk away a winner!!

Project Achievement Topics

- Agriculture Awareness
- Archaeology
- Arts
- Beef
- Between Meal Snacks
- Bicycle
- Cat Care
- Clothing & Textiles
- Communications
- Companion and Specialty Animals
- Computer Information Technology
- Crafts
- Creative Stitchery
- Current People, Places, & Events
- Dairy
- Dairy Foods
- Dog Care & Training
- Engineering & Mechanics
- Entomology
- Environmental Science
- Flowers, Shrubs & Lawns
- Food for Health and Sport
- Food Safety & Preservation
- Food Lab: Between Meal Snacks
- Food Lab: Food Fare
- Forest Resources & Wood Science
- Fresh Water Fish & Shellfish
- Fruits, Vegetables, & Nuts
- General Recreation
- General Science
- Geology
- Health
- Herpetology
- Historic People
- Historic Places & Events
- Horse
- Housing
- Human Development
- Interior Design
- International
- Marine & Coastal Ecology
- Outdoor Recreation
- Outdoor Survival Skills
- Paleontology
- Performing Arts-General
- Performing Arts-Instrumental
- Performing Arts-Vocal
- Photography & Videography
- Plants, Soils, & Fertilizers
- Poultry
- Public Speaking
- Rabbits
- Robotics
- Safety
- Sheep & Meat Goats
- Sports—Individual
- Sports—Team
- Swine
- Target Sports
- Time & Money Management
- Veterinary Science
- Wildlife
- Workforce Preparation & Career Development

For more information, contact:

Grady County 4-H
(229) 377-1312
uge4131@uga.edu

<http://ugaextension.org/county-offices/grady/4-h-youth-development.html>

Grady County 4-H

Lisa Pollock, Grady County CEC/4-H Agent
 John Sodrel, Grady County Program Assistant
 Chan Edmunds, Grady County Administrative Assistant

65 11th Ave., NE
 Cairo, GA 39828

Phone: 229-377-1312
 Fax: 229-377-9026
 E-mail: uge4131@uga.edu

Website:
<http://www.ugaextension.com/grady/4H/index.html>

Facebook:
 Visit the "Grady County 4-H" page

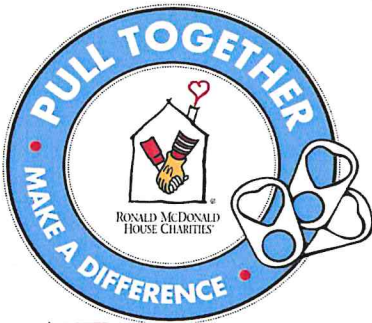
Instagram:
 Visit and follow "Grady County 4-H"



University of Georgia is an Equal Opportunity, Affirmative Action, Veteran, Disability Institution. If you need a reasonable accommodation or language access services, contact the Grady County Extension office at 229-377-1312 or uge4131@uga.edu, at least three weeks prior to the program date.



how can you help your community?



Collect pop tabs for Ronald McDonald House in Georgia. Keep your tabs in a plastic Ziploc bag and bring them by the 4-H Office at the Agri-Center by **November 13th**.



Operation Christmas Child

To participate, just take a look at the enclosed instruction sheet on "How to Pack a Shoe Box Gift". We need all shoe boxes turned in to the 4-H Office no later than Wednesday, November 13th.

4-H Calendar

Month	Date	Event
October	21-24	School Club Meetings
	22	Pumpkin Decorating Contest Turn-In Deadline
	29	Clovers in the Kitchen
	31	4-H @ Boo on Broad
November	2	Mule Day Petting Zoo
	6	Cotton Boll and Consumer Judging Contest
	9-10	Jr. Conference @ Rock Eagle
	11	Co. Hog Show Ownership Deadline
	13	Operation Christmas Child Due
	18-21	School Club Meetings
	21	Peanut Fundraiser Pick-Up Day
	25	Multi-County Portfolio Workshop
28-29	4-H Office Closed - Thanksgiving Holidays	

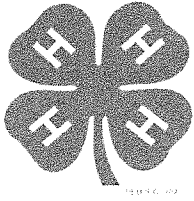
Planning for Summer?



SUMMER

CAMP

Cloverleaf Camp: June 9-13, 2025



Name: _____ Home Phone: _____
 Cell Phone: _____ Email: _____
 School: _____ Grade: _____

Grady County 4-H Peanut Fundraiser

It's time for our 29th Annual Peanut Fundraiser. Peanuts are plain salted, butter toffee and honey roasted in a 12 oz. sealed can with a re-sealable plastic lid and a Georgia Peanuts label. Great for the approaching holiday season!

Sale Dates: October 21 – November 21, 2024

Orders Due: NOVEMBER 21, 2024 – Same as pick up date

Pick up Date: Thursday, November 21, 2024 at the 4-H Office from 1:00pm-5:30 pm

Incentives: The Top Three 4-H'ers that sells the most will receive:

- 1st Place --- \$150 Scholarship
- 2nd Place --- \$125 Scholarship
- 3rd Place --- \$100 Scholarship

Anyone with \$100 or more in sales will receive a long sleeve t-shirt! Please circle the correct shirt size.

Youth Sizes

YS YM YL YXL

Adult Sizes

S M L XL 2XL

Makes checks payable to: Grady County Extension / 4-H

A note to 4-H'ers, Parents, & Customers:

4-H'ers agreeing to sell peanuts for the Grady County 4-H Club will follow the policies set forth by the Grady County Board of Education.

Proceeds from this fundraiser are used for the General 4-H programing and for 4-H staff professional improvement.

Students:

1. Do no sell door to door.
2. Do not sell to a stranger.
3. Do not sell to businesses unless they are a personal friend of your family.
4. Sell to your family and friends.
5. Ask your parents to help.

Remember that you represent 4-H and should make a good impression.

Any questions? Call 377-1312 – Lisa Pollock, John Sodrel or Chan Edmunds

Customer Name	Day Time Phone Number(s)	\$5.00 12 oz. Can Plain Salted	\$5.00 12 oz. Can Butter Toffee	\$5.00 12 oz. Can Honey Roasted	Total Amount Due	Paid

Customer Name	Day Time Phone Number(s)	\$5.00 12 oz. Can Plain Salted	\$5.00 12 oz. Can Butter Toffee	\$5.00 12 oz. Can Honey Roasted	Total Amount Due	Paid
TOTAL -						