

Asian giant hornet

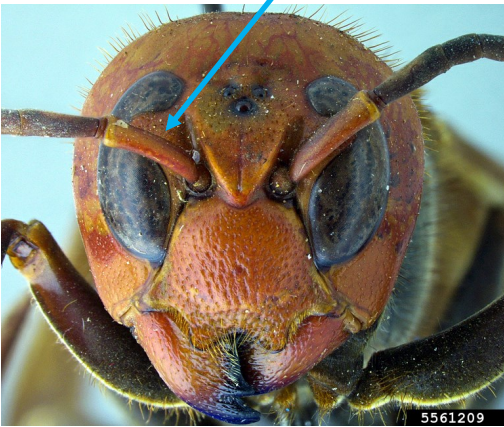
Vespa mandarinia

Overview

The Asian giant hornet, *Vespa mandarinia*, is native to East Asia, South Asia, Mainland Southeast Asia, parts of the Russian Far East. Outside its native range, it has been detected in Washington and British Columbia (Canada). ***It has not been found in any US state other than Washington (May 2020).***

Brown antenna with yellow/orange base

A. Smith-Pardo, USDA APHIS PPO, Bugwood.org

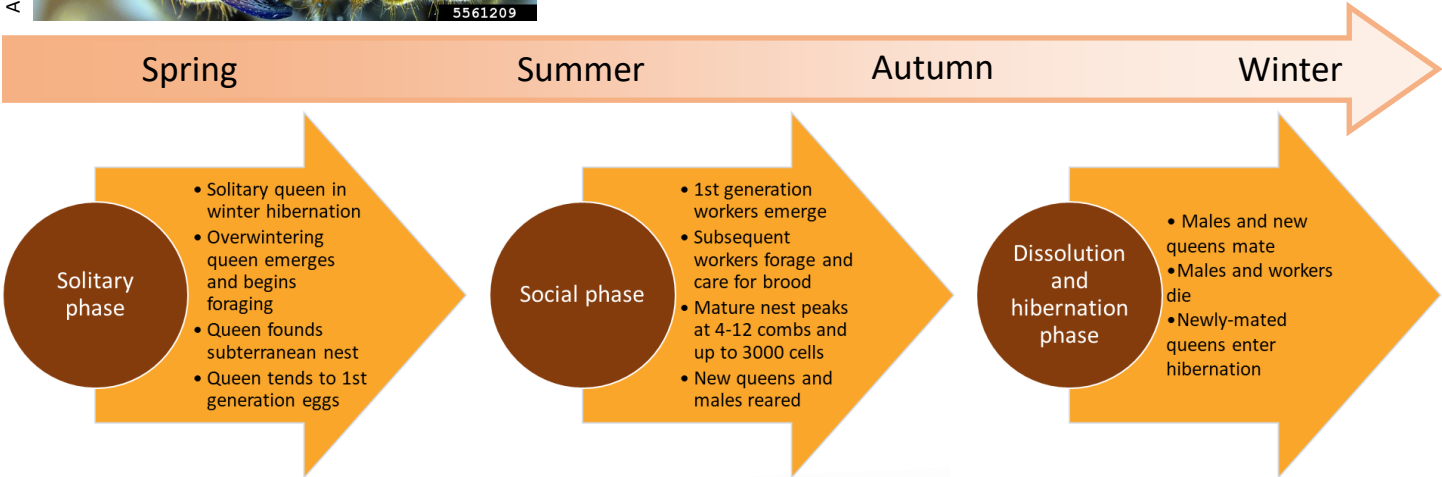


Life Stages

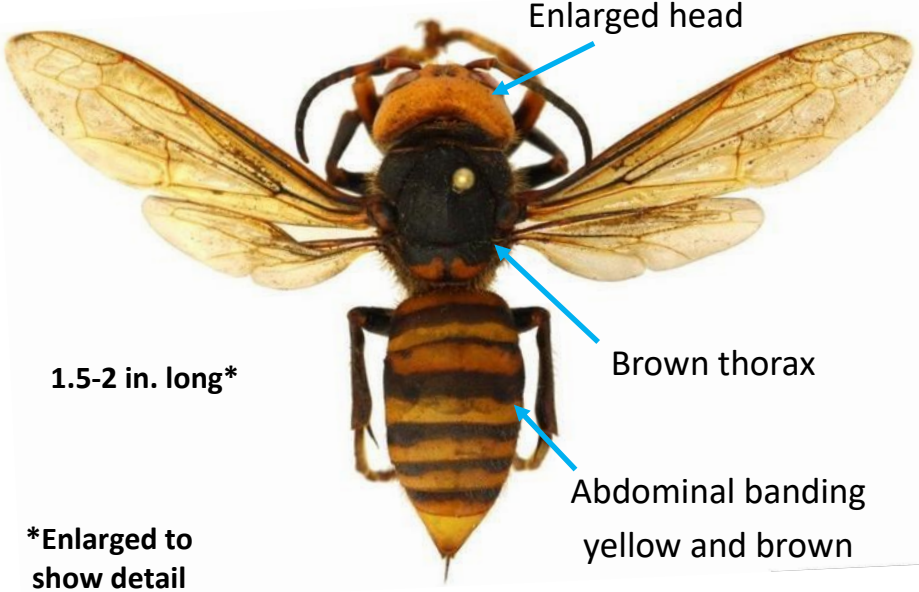
Eggs, up to 1000, are laid by the queen in comb cells Spring-Summer. The first generation of eggs are laid in small nests of about 40 cells and tended by the queens; subsequent generations are tended to by workers.

Larvae and pupae develop through five instars in the comb cells and are fed regurgitated food by the queen and then workers.

Adults are queens (reproductive females), workers (sterile females), and drones (males). Queens build the first nest of the season and produce offspring. Workers provide food, and enlarge and protect the nest. Drones mate with the queen to produce offspring.



Washington State Department of Agriculture, Bugwood.org



More Info

Predators of honey bees, they quickly decapitate the bee and harvest the thorax for food

Nests in the ground

A mature nest will have 4-12 combs with up to 3000 cells.

Easily confused with other native and non-native insects; key characteristics include:

- * Size
- * Thorax and abdomen color
- * Enlarged head