



# NEWSLETTER

## Fall Webworms

The fall webworm, *Hyphantria cunea* (Drury) (Lepidoptera: Erebidae) is a polyphagous caterpillar pest of ornamentals and trees in Georgia. “Polyphagous” means that it can feed on many types of food, and the fall webworm is known to feed on more than 600 species of plants, including row crops, herbaceous plants, shrubs, fruit, and ornamental trees in orchards, nurseries, and landscapes. Fall webworm larvae construct silk web nesting to facilitate feeding, to escape the attack of natural enemies, and for heat retention. The webbing is considered unsightly, and feeding on foliage inside the nest leads to extensive defoliation. The fall webworm can quickly reduce the aesthetic appeal of landscape trees and shrubs, and severe infestation can cause considerable damage to trees.



Pruning is a great way to manage this pest. However, intensive pruning is not recommended if populations get out of hand. Beneficial insects such as spiders, insect predators and parasitoids can impact web worm populations. Homeowners can try to control populations by tearing down the protective webs with a long pole. If the nest is disrupted then younger worms will be more vulnerable to beneficial insects.

[Click for more information](#)

September 2022



UNIVERSITY OF GEORGIA  
EXTENSION

# JORŌ SPIDER AWARENESS DAY

October 1, 2022 9:00am-11am

Expert Speakers

Spider ID Walks

Stickers and  
Handouts

Search Eventbrite for  
"Joro Spider Awareness Day"

Location: Oconee Forest Park  
Parking and Boardwalk Trail entrance  
near 5 Alumni Drive, Athens GA 30602

 **JORO WATCH**



Warnell School of Forestry  
& Natural Resources  
UNIVERSITY OF GEORGIA



College of Agricultural &  
Environmental Sciences  
UNIVERSITY OF GEORGIA

404-298-4080

uge1089@uga.edu



## Ground Covers for Shaded Landscapes

Two common problems many North Georgia landowners face are trying to establish landscapes in shaded areas in this forested part of the state and covering sloped areas with plants to reduce erosion. North Georgia's climate can be variable, with temperatures dropping into the single digits during extreme winters. Areas susceptible to deep freeze typically are found in Georgia's USDA plant hardiness zones 6 and 7 (Figure 1). It can be difficult to make proper plant selections in these regions with subfreezing temperatures and low-light conditions.

Shade can come in many forms: morning shade, afternoon shade, dappled sunlight, deep shade, etc. In addition to shade, considerations such as soil types, structure, and drainage (well-drained, moist, clay, wet, upland) also play important roles in decision-making within that shaded location.

[For more information, click here!](#)

September 2022



UNIVERSITY OF GEORGIA  
EXTENSION

# HOUSEHOLD HAZARDOUS WASTE EVENT

Sponsored by the DeKalb County Sanitation Division

**RECYCLE RESPONSIBLY**



**SATURDAY, OCTOBER 15, 2022  
8 A.M. - NOON**

**Sanitation Division's Central Transfer Station  
3720 Leroy Scott Drive, Decatur, GA 30032**

**This event is FREE and open only to DeKalb County residents.**

Proof of DeKalb County residency is required. Residents are limited to 10 gallons of paint per vehicle.

No commercial vehicles are allowed. Early arrival is highly recommended.

**For everyone's protection, event staff and residents are required to wear masks.**

## ✓ ACCEPTABLE ITEMS

- |  |   |                             |
|--|---|-----------------------------|
| ✓ Mercury  | ✓ Aerosols  | ✓ Batteries                 |
| ✓ Adhesives (glue, etc.)                                     | ✓ Flammable substances  | ✓ Photo chemicals           |
| ✓ Lawn care products   | ✓ Fluorescent light bulbs                                     | ✓ Hobby and artist supplies |
| ✓ Paint & paint-related products (strippers, solvents, etc.) | ✓ Household cleaning supplies                                 | ✓ Swimming pool chemicals   |
|  | ✓ Propane gas cylinders (1-20 lbs.; limited to 3 per vehicle) |                             |

## ✗ RESTRICTED ITEMS

- |                                      |                   |                                 |
|--------------------------------------|-------------------|---------------------------------|
| X Ammunition                         | X Pharmaceuticals | X Radioactive materials         |
| X Business-generated waste           | X Explosives      | X Biohazardous/Biomedical waste |
| X Gasoline                           | X Diesel          | X Kerosene                      |
| X Automotive waste (fuel, oil, etc.) |                   |                                 |

404-298-4080

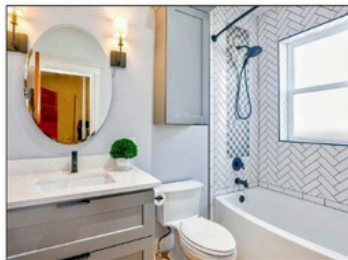
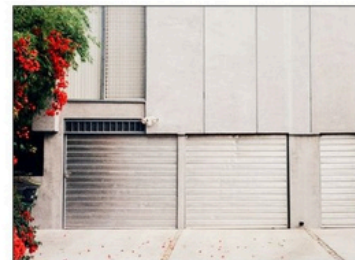
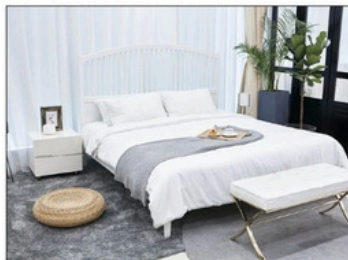
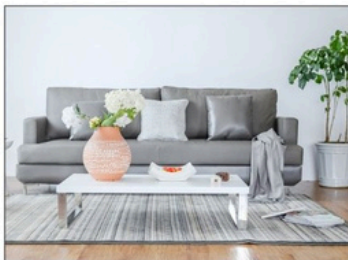
uge1089@uga.edu



# GOOD HEALTH STARTS AT HOME: What's In Your House?

Revised by: Pamela Turner and Diandria Barber

Written by: Pamela Turner and Colin Couch



Photos courtesy of canva.com

## Common hazardous household products by room:

**Living Room:** Carbon monoxide, candles, incense, tobacco smoke and lead.

**Bedroom:** Dry cleaning, mercury thermostat, tobacco smoke, mothballs and lead.

**Garage:** Pesticides, herbicides, fungicides, weed killer, fertilizer, automotive batteries, antifreeze, brake fluid, gasoline, diesel, motor oil, transmission fluid, starter fluid, carbon monoxide, and car polish and wax.

**Kitchen:** Ammonia, air freshener, furniture polish, lighter fluid, metal polish, oven cleaner, batteries, light bulbs and lead.

**Bathroom:** Medications, aerosol sprays, corrosive chemicals, disinfectants, drain cleaner, tub and tile cleaner, toilet bowl cleaner, window cleaner, and lead.

**Laundry Room:** Bleach, detergent, stain remover, fabric softeners and fluorescent light bulbs.

**Basement:** Paint, paint stripper, paint thinner, stain, turpentine, varnish and radon.



### Select Safer Products

- Read the label to see if the ingredients are safe to use in your home.
- Buy fewer hazardous household chemicals. Look for signal words on the label. **POISON** means highly toxic. **DANGER** means extremely flammable or corrosive or highly toxic. **WARNING** or **CAUTION** means less toxic.
- Use multi-use products to limit the number of products in your home.
- Avoid using aerosol products with hazardous or toxic propellants.
- Use green cleaning products. Find recipes to make green cleaning products at [www.georgiahealthyhousing.org](http://www.georgiahealthyhousing.org).

### Dispose of Products Properly

- Both alkaline and rechargeable batteries can be recycled.
- Gasoline and motor oil can be dropped off at automotive retail stores.
- Fluorescent lights contain small amounts of mercury and can often be dropped off for recycling in home improvement stores.
- Prescription drugs should not be washed down the sink nor flushed down the toilet. Improper disposal can result in water and soil contamination. Contact your local government to see if your community holds a prescription drug take back day.
- Work with your community to hold a hazardous household waste collection day.
- Find out where to take hazardous household items online at [www.earth911.com](http://www.earth911.com) or contact your local recycling or waste management provider.

### Use and Store Products Safely

- Read and follow the directions on the label.
- Use in a well-ventilated area. Fumes from products such as bleach can cause harm to the eyes, nose, throat, esophagus, respiratory tract and lungs when used in an enclosed space.
- Never mix products containing bleach and ammonia.
- Remember, hazardous products may be flammable, explosive/reactive, corrosive/caustic, toxic/poisonous or reactive. Follow label directions for proper storage.
- Leave the product in its original container with the original label attached.
- Never store household products in food or beverage containers, including homemade green cleaning and pesticide products.
- Store on high shelves or in locked cabinets out of reach of children and animals.
- Keep volatile products—those that warn of vapors and fumes—in a well-ventilated area.

[www.georgiahealthyhousing.org](http://www.georgiahealthyhousing.org)



UNIVERSITY OF GEORGIA  
EXTENSION



[extension.uga.edu](http://extension.uga.edu)

Circular 1051

Revised August 2020

Published by the University of Georgia in cooperation with Fort Valley State University, the U.S. Department of Agriculture, and counties of the state. For more information, contact your local UGA Cooperative Extension office. The University of Georgia College of Agricultural and Environmental Sciences (working cooperatively with Fort Valley State University, the U.S. Department of Agriculture, and the counties of Georgia) offers its educational programs, assistance, and materials to all people without regard to race, color, religion, sex, national origin, disability, gender identity, sexual orientation or protected veteran status and is an Equal Opportunity, Affirmative Action organization.

September, 2022



UNIVERSITY OF GEORGIA  
EXTENSION

## **E.M.B.A.R.C. Community Youth Farm**

Join DeKalb County Park Naturalist Jennifer McLaurin for a community service project at the brand new E.M.B.A.R.C. Community Youth Farm at the former Bransby YMCA site. We will spend the morning removing invasive plants and preparing the area for the soon-to-come bee apiary.

Do you like being outside and don't mind getting a little dirty? This volunteer project will help make this new park more welcoming to all! Everyone is welcome, and there will be volunteer opportunities for all abilities and ages 12 and up (accompanied by an adult). Participants must bring work gloves, wear closed-toe shoes, and fill out a safety waiver upon arrival. Everyone is responsible for their safety while on the property. Dress for the weather and bring a reusable water bottle and a snack.

Multiple Dates Available

404-298-4080

[uge1089@uga.edu](mailto:uge1089@uga.edu)

September 2022



UNIVERSITY OF GEORGIA  
EXTENSION

## Classes, Workshops, and Club Meetings

UGA Extension offers a wealth of personalized services like workshops, classes, consultation, certifications, camps, and educator resources. Find out what Extension has for you!

Curricula & Lesson Plans

Horticulture and Environment

Green Industry

Food Preservation, Safety  
and Manufacturing

Production Agriculture

Health and Wellness

Youth Programs

404-298-4080

[uge1089@uga.edu](mailto:uge1089@uga.edu)





## Upcoming Events

[Click listing to register](#)

**Fall Planting & Transplanting**– September 28th at 6pm

"Beat the heat and plant your landscape in the fall. Come learn about planting and transplanting your landscape plants in the fall."

**Seasonal Color**–October 12th at 6pm

"Add some color and interest to your garden in the fall and winter. We will cover the best fall and winter annuals and perennials to spruce up your landscape."

**Bulbs & Plants for Winter Interest**– November 8th at 6pm

"Add color and interest to your garden year-round. We will discuss spring flowering bulbs and plants that put on a show in the winter months."

**Care of Holiday Plants**– November 29th at 6pm

"The holidays are around the corner. Learn how to properly care for the plants that people like to give and receive in the holiday months."

[Follow us on Facebook!](#)