



UNIVERSITY OF GEORGIA  
**EXTENSION**

May 2024

<https://extension.uga.edu>

*An Equal Opportunity, Affirmative  
Action, Veteran, Disability Institution*

University of Georgia Cooperative  
Extension DeKalb County Office

# Journeyman Farmer Certificate Program graduates thirteen

Journeyman Farmer was developed by UGA Extension and partners to provide comprehensive training to a growing new and beginning farmer audience- individuals who have been farming less than 10 consecutive years. This program is best suited to those who are interested in starting a farm business or those who have recently begun farming and want to improve their operation. The Journeyman Farmer Certificate Program has two parts- small business training and production training.

The program will cover farm business topics including financial statements and recordkeeping, financing opportunities, risk management, marketing, and business plan development. The second part of Journeyman Farmer includes seven classes of production training. The program will cover soil health and fertility, cover crops and ground covers, crop rotation and pest management, crop selection, propagation, and management, irrigation and equipment, food safety, and marketing.





UNIVERSITY OF GEORGIA  
EXTENSION



May 2024

<https://extension.uga.edu>

# Spring Swarms Bring No Harm

First off- why do honey bees swarm? Swarming is a natural behavior in the life cycle of a honey bee colony. A honey bee colony typically contain several hundred to several thousand bees, all of whom have specific jobs or purposes in the hive. In mid-winter, the queen of a hive starts laying eggs to start the next generation of bees. As those eggs hatch and mature into bees, the colony becomes overcrowded. In the late spring and early summer, large groups of honey bees may leave the established colony in search of a new home, creating a swarm. This swarming process creates two colonies out of the old one, typically  $1/3$  to  $1/2$  of the size of the original. Once a group of honey bees swarm, they will cluster on a tree, shrub, or other object. The majority of the bees will stay put while scouting bees search for a suitable location for the new colony. Usually, this process only takes a day or two. Once a new home is found, the swarm breaks up and flies to it as a group.

While a honey bee swarm might be an alarming sight to see, they're truly not a concern for most people. To be clear, if you have a bee allergy, please be cautious and do not put yourself in danger! However, during a swarm period, honey bees are not aggressive. Most of the time if honey bees are aggressive towards you, it's because they are trying to protect their hive, brood, or honey stores. Since a swarm has none of those things, they tend to be pretty docile, with their focus on finding a new home and protecting their queen.

If you are faced with a honey bee swarm, the best course of action is to leave it alone. Please do not attempt to destroy, shoo away, or spray the swarm with an insecticide.

Honey bees are critical for pollination of many plants, including those that feed people. If the swarm is located somewhere dangerous, such as a playground, or sticks around for more than a few days, you may want to contact a beekeeper to come collect it. There are a few individuals in the region who do so- feel free to contact our office for some names.

As a final warning – bee swarms are often attracted to spaces in walls, decks, or other areas that provide safe housing for the colony. Be sure to prevent entry by caulking entry sites like knot holes, siding gaps, and openings for electric and plumbing. If a colony takes up residence in your home, a certified bee remover must be used to get rid of them. A licensed structural pest control company or operator can be found at the Georgia Department of Agriculture website

Colbi Turner, Lincoln County

An Equal Opportunity, Affirmative Action, Veteran, Disability Institution







# Non-Native Identification

As the weather encourages us to spend more time outside, chances are you will come across some critters you may not be familiar with. If you see a plant, insect, or animal you don't recognize, try and get a picture or two. Do NOT put yourself in danger to get those pictures!

You can send your photos to us at [uge1089@uga.edu](mailto:uge1089@uga.edu) for help with identification. Or if you're the investigative type, you can compare what you saw against the native plants and animals in Georgia as well as exotic species lists.

If you feel you have found an invasive species, you can report it at <https://www.eddmaps.org/>

Some common non-native species we often get calls about are below.



Hammerhead Worm



Joro Spider



Alligator Weed



Asian Giant Hornet

**THIS IS NOT IN GEORGIA**



Leatherleaf Mahonia



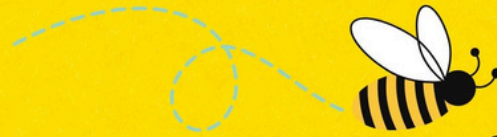
UNIVERSITY OF GEORGIA  
EXTENSION

May 2024

<https://extension.uga.edu>



UNIVERSITY OF GEORGIA  
EXTENSION  
DeKalb County



# So, You Think You Want Bees?

Join Pike County Agriculture and Natural Resources Agent, Brooklyne Wassel to find out if bees are right for you. This class will cover information like budget, equipment, and expectations associated with getting started with beekeeping. This is a free, virtual session. Register at <https://t.uga.edu/9Qn> or scan QR code to receive the zoom meeting link.



Wednesday, May 22nd  
12:00 PM - 1:00 PM

An Equal Opportunity, Affirmative Action, Veteran, Disability Institution  
If you are an individual with a disability who may require assistance or accommodation in order to participate in or receive the benefit of a service, program, or activity of UGA, or if you desire more information, please contact us.

## DEKALB EXTENSION UPCOMING GARDEN CLASSES

### Attracting Pollinators: May 9th at 6pm

"Pollinators are not just butterflies & bees. Let's learn about all the other pollinators are in Georgia and how to have a friendly space in your landscape for them."

### Cut Flower Gardens- May 16th at 6pm

"Instead of always buying pre-cut fresh flowers, turn to your landscape for fresh bouquets."



### Gardening Tips & Tricks: June 13th at 12pm Lunch & Learn

"Gardening tips to use in your landscape to help save money and tricks of the landscape pros."

## Registration Link for all classes

<https://zoom.us/meeting/register/tJltcuCsrDgvHdU3GZ2TFMGIZBfaaykuyqWF#/registration>

An Equal Opportunity, Affirmative Action, Veteran, Disability Institution

If you are an individual with a disability who may require assistance or accommodation in order to participate in or receive the benefit of a service, program, or activity of UGA, or if you desire more information, please contact us.

Click here to take a quick survey to help us plan what classes will be next!

An Equal Opportunity, Affirmative Action, Veteran, Disability Institution





UNIVERSITY OF GEORGIA  
**EXTENSION**

May 2024

<https://extension.uga.edu>

## Upcoming E.M.B.A.R.C. Events

May 11 – Mother's Day Hike 11am–1pm

Celebrate this Mother's Day with a guided hike in the Youth Farm Forest. Bring a picnic lunch and blanket and enjoy the park's beauty and peacefulness. The Youth Farm has a large field perfect for running around, flying a kite, throwing a frisbee, or reading a book.



# Camping in DeKalb

Registration Opens February 1

## 2024 DeKalb County 4-H Summer Camps



### Senior EXTREME Camp

**June 03-07**

Senior EXTREME Camp is a more primitive camping experience, providing for tent camping, preparation of campers' own meals, and a focus on outdoor recreational activities, among its activities. **Grades 9-12**

### Wilderness Challenge Camp

Join us for a thrilling week of camp focused on outdoor survival and adventure for the middle school child. WCC is a week during the summer created for campers committed to enjoying some real adventure. **Grades 6-8**

**June 17-21**

### Junior Camp

**July 15-19**

Junior Camp is a week-long experience that includes visits to the beach plus many other exciting activities. This fun and rewarding experience is filled with opportunities for character building, great fun, and true adventure. **Grades 7-8**

### Senior Camp

Senior Camp's activities provide learning experiences in healthy living, agriculture, STEM, and civic engagement to promote the development of leadership skills, and encourage community service, all in a fun and active camping environment. **Grades 9-12**

**July 01-05**

### Cloverleaf Camp

**June 17-21**

Georgia 4-H Summer Camp at Rock Eagle provides an outdoor summer program unparalleled in the nation. Our array of workshops offers a hands-on experience that makes learning fun. **Grades 4-6**

All camps are \$400. A \$75 deposit is due at the time of registration. Final payments must be made by **Monday, April 22, 2024** for all camps. A **MANDATORY Parent Meeting** will be held on **Wednesday, May 16, 2024** at 6:00 p.m. for all camps.



For detailed information:  
Call: (678)708-7357 or (678)698-8510

An Equal Opportunity, Affirmative Action, Veteran, Disability Institution





UNIVERSITY OF GEORGIA  
EXTENSION

May 2024

<https://extension.uga.edu>

# 4-H Day at Medieval Times<sup>®</sup>

## DINNER & TOURNAMENT



Join DeKalb County 4-H



**June 1, 2024**  
5:00 pm



**Atlanta Castle**  
5900 Sugarloaf Parkway,  
Lawrenceville, GA 30043



**\$30.95**

**GRADES 4-12**  
AS OF END OF 2023-2024 SCHOOL YEAR

### FEATURING

- A 90-minute show experience
- A four-course lunch. Vegetarian and allergen meals available
- A live tournament with six competing knights, jousting, sword fighting, and beautiful horses

**REGISTER NOW**

[HTTPS://TINYURL.COM/DEKALB4-HDAYATMEDIEVALTIMES](https://tinyurl.com/dekalb4-hdayatmedievaltimes)



**Contact:**  
678.698.8510

[mical.stclair@uga.edu](mailto:mical.stclair@uga.edu)  
[leslie.reese@uga.edu](mailto:leslie.reese@uga.edu)

"This institution is an equal opportunity provider."



UNIVERSITY OF GEORGIA  
EXTENSION



An Equal Opportunity, Affirmative Action, Veteran, Disability Institution





UNIVERSITY OF GEORGIA  
**EXTENSION**

May 2024

<https://extension.uga.edu>

**COMMUNITY  
CAMP AT**

Adventure  Outdoors  Fun!

**FORTSON**  
July 14-18, 2024

**UNIVERSITY OF GEORGIA  
EXTENSION**

If you are an individual with a disability who may require assistance or accommodation in order to participate in or receive the benefit of a service, program, or activity of UGA, or if you desire more information, please contact us.

An Equal Opportunity, Affirmative Action, Veteran, Disability Institution

SAVE THE DATE!

**4-H DAY AT THE ATLANTA HISTORY CENTER**

July 18th, 2024

**HISTORY LIVES HERE**

Learn about Atlanta and Georgia history, visit cyclorama, see the historic Swan House and tour our historic farm and gardens!

Registration is \$7 per person.

We will also be offering the opportunity to share your 4-H project and show animals.

**SCHEDULE**

9:00 -9:45 am-  
registration  
10:00-10:30 am-  
orientation  
10:00- 3 pm-  
tours and activities

**UNIVERSITY OF GEORGIA  
EXTENSION**

**ATLANTA  
HISTORY  
CENTER**

**4-H Day at the Braves**

**Truist Park**  
755 Battery Avenue  
Atlanta, GA 30339  
Saturday,  
July 20, 2024  
7:20 pm

Ticket orders due by June 29, 2024

Cost: \$38 per ticket  
(children 2 and under  
FREE)

<https://fevo-enterprise.com/event/Georgia4H>

An Equal Opportunity, Affirmative Action, Veteran, Disability Institution

**UNIVERSITY OF GEORGIA  
EXTENSION**

**DEKALB COUNTY**





# Gardening Calendar

## May

- Make third plantings of vegetables mentioned for April (snap beans, corn, squash, lima beans).
- Control grass and weeds; they compete for moisture and fertilizer.
- Locate mulching materials for such crops as tomatoes, peppers, eggplant, Irish potatoes, okra, and lima beans. Apply before dry spells occur but after plants are well established (usually by blooming time).
- Pole beans cling to the trellis or sticks more readily if attached by the time they start running.
- Try a few tomato plants on stakes or trellises this year. Now is the time to start removing suckers and tying the plants up.
- Watch out for the "10 most wanted" culprits: Mexican bean beetle, Colorado potato beetle, bean leaf beetle, Harlequin cabbage bug, blister beetle, cabbage worm, tomato hornworm, tomato fruit worm (and corn earworm), cucumber beetle, and squash bug. Early discovery makes early control possible. Follow the schedule given in the [Georgia Pest Management Handbook](#) for control of corn earworm and pickleworm.
- Begin disease control measures as needed. Check with your county Extension office for more information.
- Water as needed.
- Mulch as needed.
- Keep a log book of problems and failures that occur so you can avoid or prevent them in the next planting season. Note successful techniques and varieties for consideration next season.
- Make plans now for putting up some of your garden produce. Check with your county Extension office for more information.



UNIVERSITY OF GEORGIA  
**EXTENSION**

May 2024

<https://extension.uga.edu>



UNIVERSITY OF GEORGIA  
**EXTENSION**

# UNDERSTAND AND IMPROVE YOUR CREDIT SCORE

**Tuesday, May 7th  
5:30 p.m. to 7:30 p.m.**

**Tall Tales Book Shop  
2105 Lavista Rd NE Ste 108,  
Atlanta, GA 30329**

Want to avoid mistakes that can keep you from getting approved for a loan?

Join us to learn more about the factors that contribute to your credit score and why they are important.

**To register**

**<https://bit.ly/understandandimprovedekalb>**

*An Equal Opportunity,  
Affirmative Action,  
Veteran, Disability  
Institution*

*An Equal Opportunity, Affirmative Action, Veteran, Disability Institution*





UNIVERSITY OF GEORGIA  
EXTENSION

May 2024

<https://extension.uga.edu>



Metro Atlanta UGA Extension

# KOMBUCHA WORKSHOP

Learn how to make kombucha with us and leave with supplies to make your own at home!

HOSTED BY



Red's Beer Garden  
1328 Boulevard SE Atlanta, 30315

Red's serves lunch and many beverage options!



**\$25 WILL INCLUDE**

← SCOBY  
Thermometer  
Kombucha drinking glass  
Research-based recipe  
Step-by-step home instructions

**JOIN US**

**MAY 25, 2024**

**1 PM**

Register HERE:  
[bit.ly/ugametrokombucha](https://bit.ly/ugametrokombucha)

AN EQUAL OPPORTUNITY, AFFIRMATIVE ACTION, VETERAN, DISABILITY INSTITUTION

IF YOU ARE AN INDIVIDUAL WITH A DISABILITY WHO MAY REQUIRE ASSISTANCE OR ACCOMMODATION IN ORDER TO PARTICIPATE IN OR RECEIVE THE BENEFIT OF A SERVICE, PROGRAM, OR ACTIVITY OF UGA, OR IF YOU DESIRE MORE INFORMATION, PLEASE CONTACT US



UNIVERSITY OF GEORGIA  
EXTENSION

An Equal Opportunity, Affirmative Action, Veteran, Disability Institution



## Tips on asking for advice from your Extension Service

Take pictures – clear pictures of the whole plant, the affected leaves (top and bottom), stems, fruit, and of any bugs or eggs you see

Have information ready – When was it planted? How long has the problem been present? Have you tried any kind of treatment already? Are other plants having the same issues?

Bring in a sample – We are happy to try and diagnose problems in our office (Free). However, for some problems, samples are sent to the UGA Plant Pathology Lab (\$14)

Samples should be in an enclosed bag or container, with a paper towel, and include leaves, stems, roots, flowers/fruit, and any insects that were found on it.

Email us at [UGE1089@uga.edu](mailto:UGE1089@uga.edu)

Call us at 404-298-4080

An Equal Opportunity, Affirmative Action, Veteran, Disability Institution  
***If you are an individual with a disability who may require assistance or accommodation in order to participate in or receive the benefit of a service, program, or activity of UGA, or if you desire more information, please contact us.***