



Coweta Clover Connection

255 Pine Road | Newnan, Georgia 30263 | 770-254-2620
 coweta.extension@uga.edu | www.ugaextension.org/coweta
September 2025



4-H BB Gun Team Registration

OPEN TO 4th - 9th GRADERS

Activity fee and additional information will be provided at the meeting.

Must attend the Informational meeting:

Tuesday, September 30th at 6:00pm

at the Coweta Extension Office,
 255 Pine Road, Newnan



Shooting safety and hunter education will be the focus for the first 8 weeks. At the end of that time, try-outs and a test will determine this year's team.

**Limited Spots available*
 Contact our office for more info*

How do I get 4-H club points?



Collect Pop Tabs

Attend Coweta 4-H Events

Signed Newsletters

Join a Coweta 4-H Specialty Club or Team

Participate in Project Achievement

Complete "Communicate/Evaluate"

Coweta 4-H Special Interest Clubs

Club	Location	Upcoming Meetings
Horse & Pony Club	Coweta County Extension Office - 255 Pine Road, Newnan	Sept. 4th @ 7pm Oct. 2nd @ 7pm
Ag Discovery Club	Coweta County Extension Office - 255 Pine Road, Newnan	Oct. 16th @ 7pm Nov. 20th @ 7pm
Poultry Club	Coweta County Fairgrounds Ag Building - 275 Pine Road, Newnan	Sept. 8th @ 7pm Oct. 13th @ 7pm
K-9 Club	Coweta County Extension Office - 255 Pine Road, Newnan	Oct. 23rd @ 7pm

Check our website for more information!

www.ugaextension.org/coweta

Like us on Facebook at www.facebook.com/coweta4h



**Come see us at the
 Coweta County Fair!**

September 18th - 28th



www.cowetacountyfair.net

After parent/guardian and student have read this newsletter, sign and return to teacher.
 Additional 5 club points for completion of "Evaluate/Communicate" on reverse side.



Student's name: _____

Student's school: _____

Parent/Guardian's signature: _____

**5 CLUB POINTS
 September
 2025**

5th Grade 4-H Lesson #1

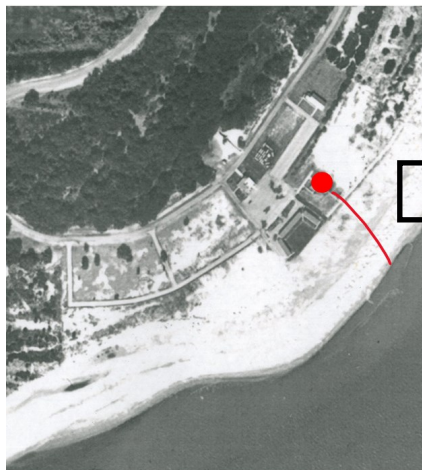
Constructive & Destructive Forces

Georgia's Barrier Islands



Vocabulary

Barrier Island - a long, narrow strip of land that lies parallel to the mainland
Erosion - the process of moving sediment by wind, water, or ice
Deposition - process in which sediments, soil, and rocks are dropped or added to a landform or land mass
Constructive Force - processes that build up Earth's surface
Destructive Force - processes that break down Earth's surface
Weathering - process of breaking up rocks into sediments; can be mechanical or chemical
Sand Dunes - natural erosion control on the beach made from piles of sand and other vegetation
Sea Oats - natural erosion control on the beach, the roots spread out in vertical runners and stabilize the dune



Camp Jekyll 1960



Camp Jekyll 2020

60 Years of Deposition on the South End of Jekyll Island, GA

The dots on the section of the island in each picture above are located on the same building.

Evaluate/Communicate: What differences do you see in the pictures of Camp Jekyll? How did the changes occur?
